



Florida's Office of Early Learning

Rick Scott
Governor
Mel Jurado
Director

November 4, 2011

Jerry L. McDaniel, Director
Office of Policy and Budget
Executive Office of the Governor
1701 Capitol
Tallahassee, Florida 32399-0001

JoAnne Leznoff, Staff Director
House Appropriations Committee
221 Capitol
Tallahassee, Florida 32399-1300

Terry Rhodes, Staff Director
Senate Budget Committee
201 Capitol
Tallahassee, Florida 32399-1300

Dear Directors:

Pursuant to Chapter 216, Florida Statutes, our Legislative Budget Request for the Office of Early Learning is submitted in the format prescribed in the budget instructions. The information provided electronically and contained herein is a true and accurate presentation of our proposed needs for the 2012-13 Fiscal Year. This submission has been approved by me.

Sincerely,

A handwritten signature in cursive script, appearing to read "Melody Jurado".

Melody Jurado, Ph.D.
Director

Florida's Office of Early Learning

The Holland Building, Suite 152•600 South Calhoun Street•Tallahassee, Florida•32399-4120
Telephone (850) 921-3180•Fax (850) 488-0360

www.floridaearlylearning.com

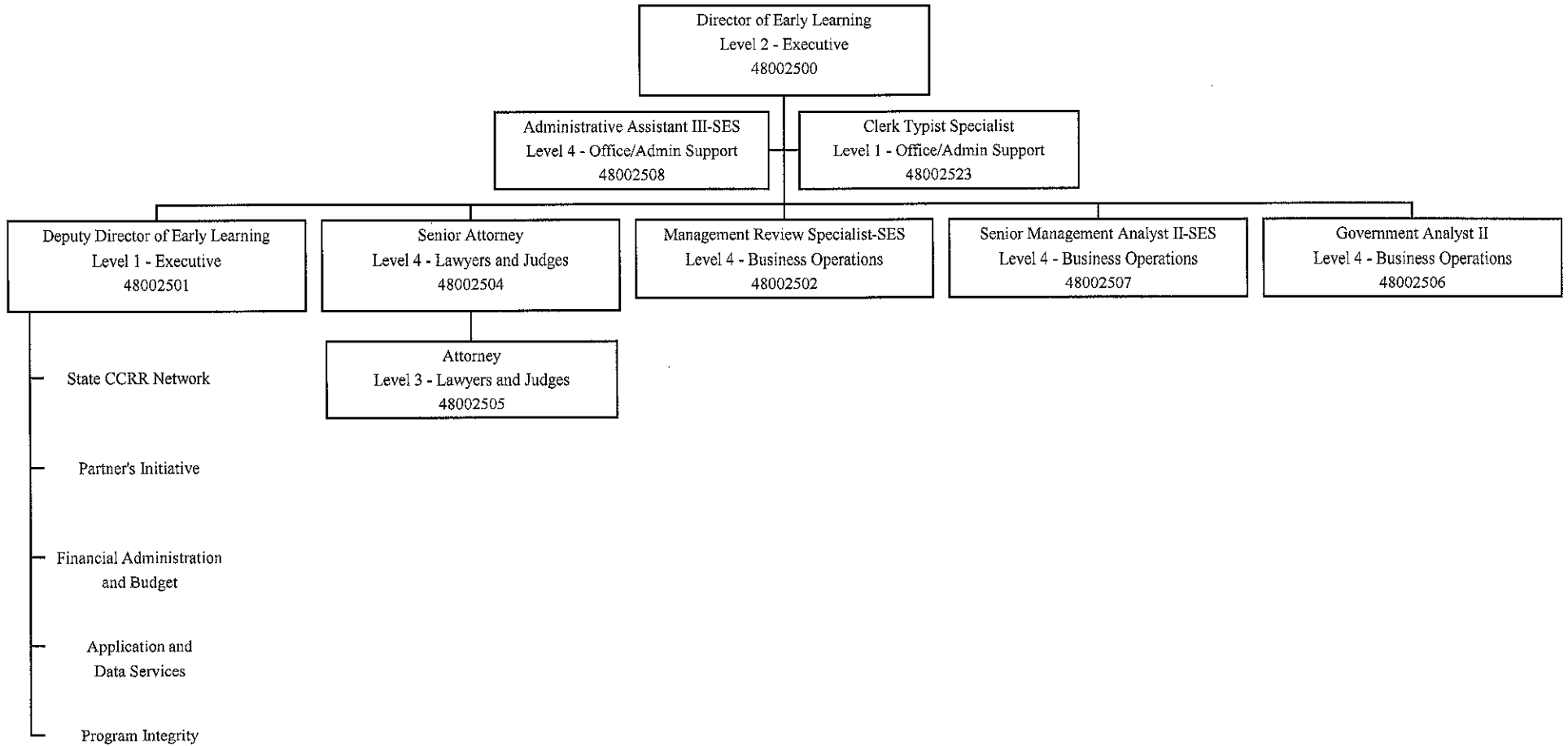
An equal opportunity employer/program. Auxiliary aids and services are available upon request to individuals with disabilities. All voice telephone numbers on this document may be reached by persons using TTY/TDD equipment via the Florida Relay Service at 711.

Office of Early Learning

Fiscal Year 2012-2013 Exhibits and Schedules

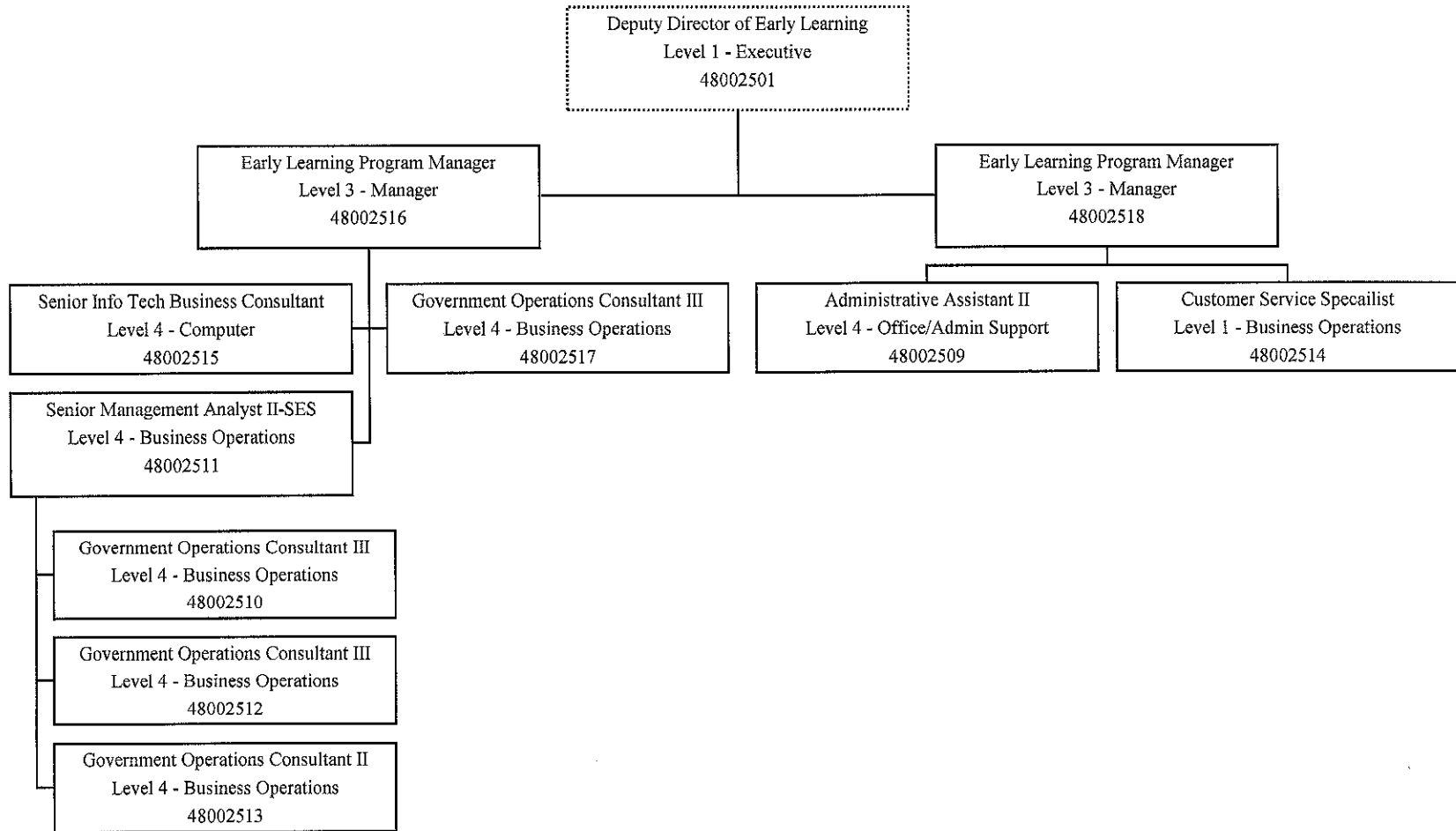
FLORIDA DEPARTMENT OF EDUCATION
 OFFICE OF EARLY LEARNING
 OFFICE OF THE DIRECTOR

DBS: 753000



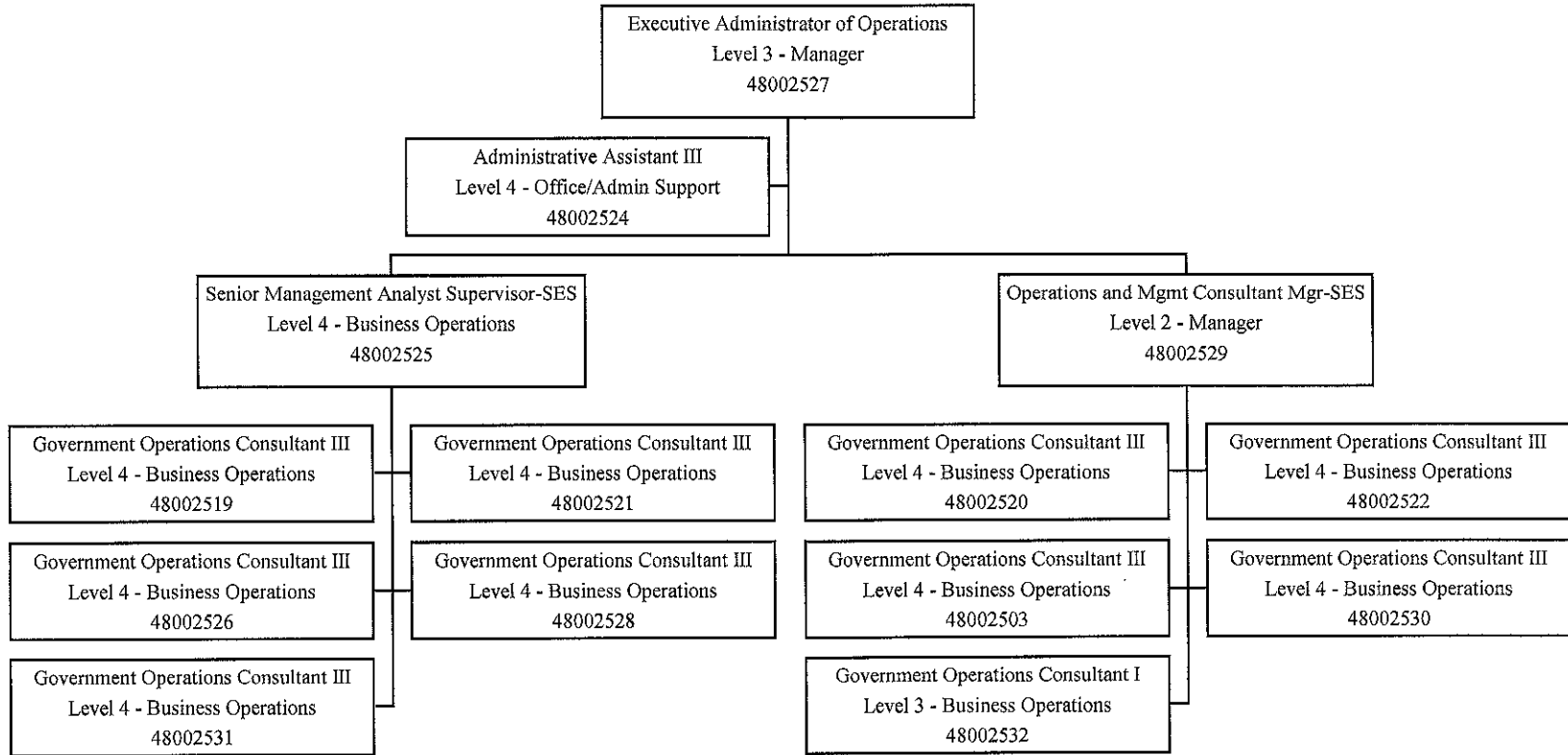
FLORIDA DEPARTMENT OF EDUCATION
 OFFICE OF EARLY LEARNING
 STATE CCRR NETWORK

DBS: 753010



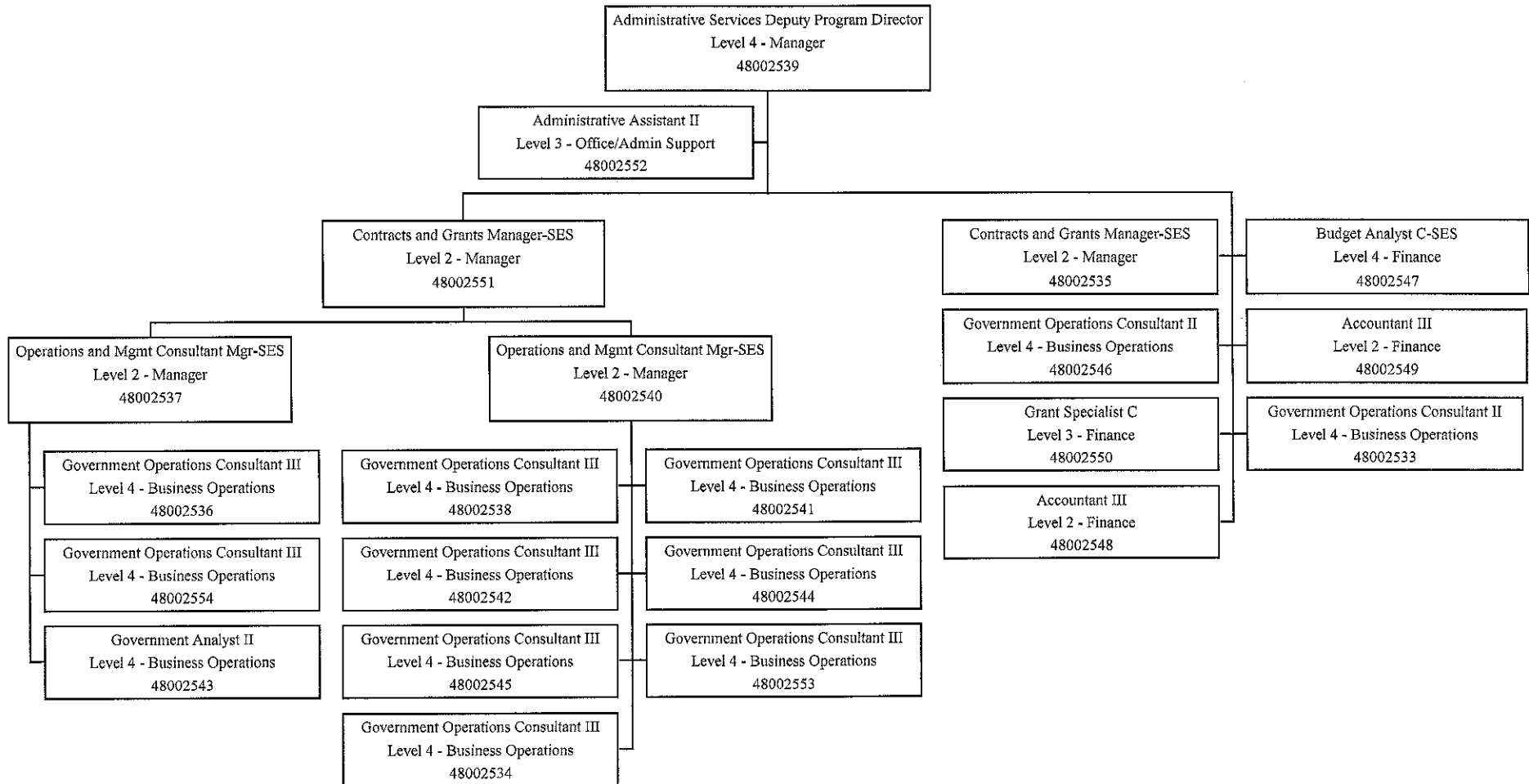
FLORIDA DEPARTMENT OF EDUCATION
 OFFICE OF EARLY LEARNING
 PARTNER'S INITIATIVE

DBS: 753020



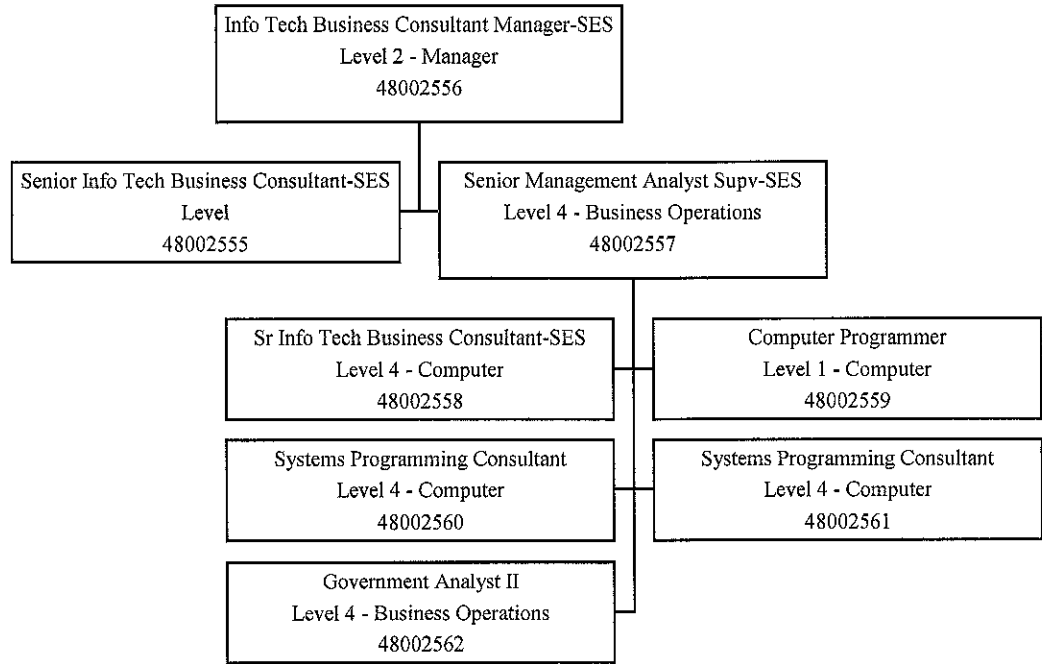
FLORIDA DEPARTMENT OF EDUCATION
 OFFICE OF EARLY LEARNING
 FINANCIAL ADMINISTRATION AND BUDGET

DBS: 753030



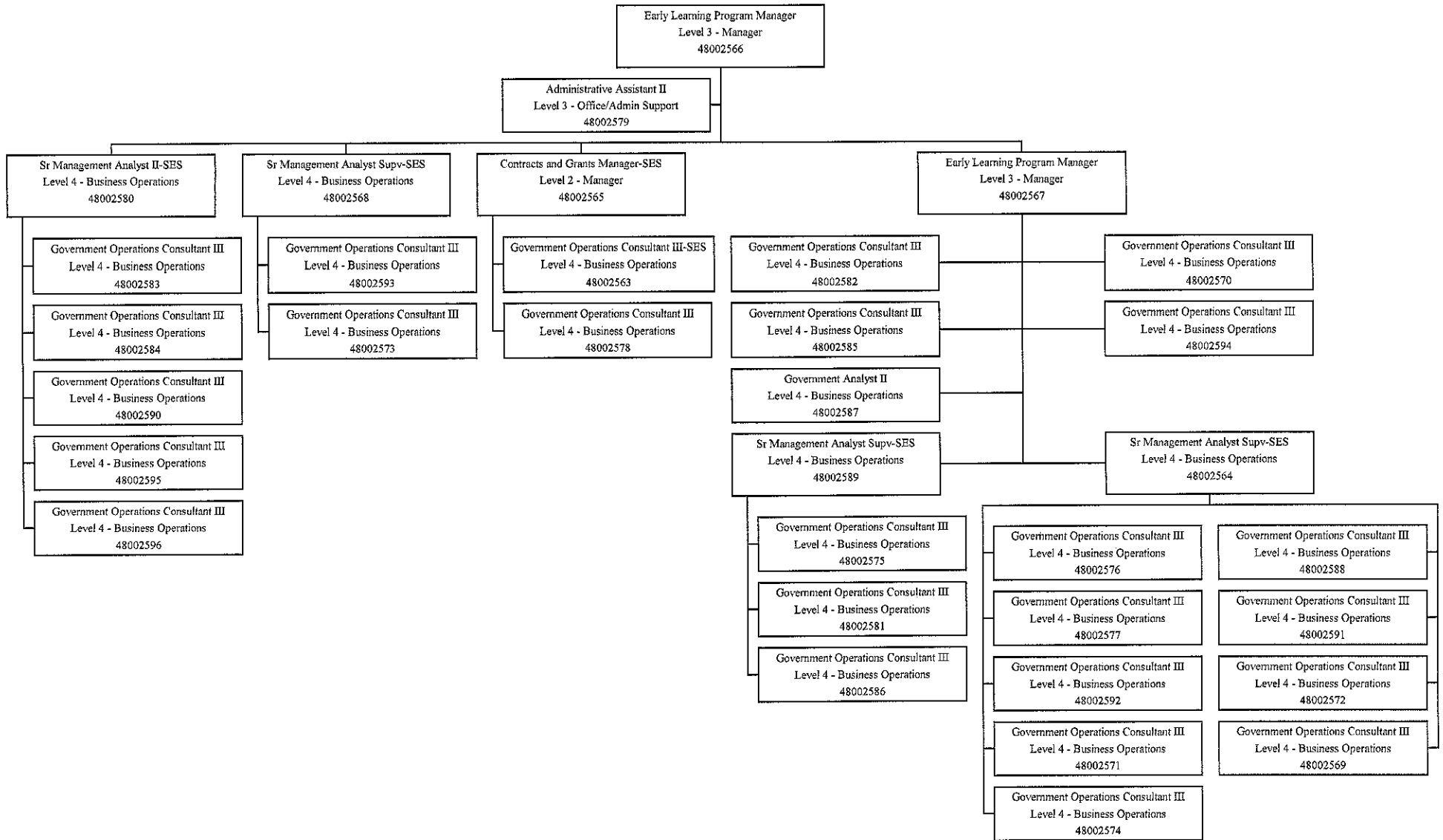
FLORIDA DEPARTMENT OF EDUCATION
OFFICE OF EARLY LEARNING
APPLICATION AND DATA SERVICES

DBS: 753040



FLORIDA DEPARTMENT OF EDUCATION
 OFFICE OF EARLY LEARNING
 PROGRAM INTEGRITY

DBS: 753060



Schedule XIV Variance from Long Range Financial Outlook

Agency: Office of Early Learning/Department of Education

Contact: Dr. Melody Jurado

Article III, Section 19(a)3, Florida Constitution, requires each agency Legislative Budget Request to be based upon and reflect the long range financial outlook adopted by the Joint Legislative Budget Commission or to explain any variance from the outlook.

- 1) Does the long range financial outlook adopted by the Joint Legislative Budget Commission in September 2011 contain revenue or expenditure estimates related to your agency?

Yes No

- 2) If yes, please list the estimates for revenues and budget drivers that reflect an estimate for your agency for Fiscal Year 2012-2013 and list the amount projected in the long range financial outlook and the amounts projected in your Schedule I or budget request.

| | Issue (Revenue or Budget Driver) | R/B* | FY 2012-2013 Estimate/Request Amount | |
|---|----------------------------------|------|--------------------------------------|----------------------------|
| | | | Long Range Financial Outlook | Legislative Budget Request |
| a | Workload and Enrollment - VPK | B | 9 | 9 |
| b | | | | |
| c | | | | |
| d | | | | |
| e | | | | |
| f | | | | |

- 3) If your agency's Legislative Budget Request does not conform to the long range financial outlook with respect to the revenue estimates (from your Schedule I) or budget drivers, please explain the variance(s) below.

* R/B = Revenue or Budget Driver

SCHEDULE IX: MAJOR AUDIT FINDINGS AND RECOMMENDATIONS

Budget Period: 2012-13

Department: DOE/Office of Early Learning

Chief Internal Auditor: _____

Budget Entity: Office of Early Learning

Phone Number: 717-8510

| (1) | (2) | (3) | (4) | (5) | (6) |
|---------------|---------------|--|--|---|-----------------------------------|
| REPORT NUMBER | PERIOD ENDING | UNIT/AREA | SUMMARY OF FINDINGS AND RECOMMENDATIONS | SUMMARY OF CORRECTIVE ACTION TAKEN | ISSUE CODE |
| FA 10-050 | 30-Jun-11 | CCDF (Child Care and Development Fund) Cluster CFDA Nos. 93.575, 93.596, and 93.713 | Effective security access controls had not been established for the Enhanced Field System (EFS) and the Consolidated Database. | FAWI developed a process for maintaining a current list of users and their access privileges. Periodic reviews of the access list will be conducted and any changes necessary will be made. Access authorization forms have been completed for IT staff with access allowing change of information to the Consolidated Database. Additionally, FAWI discontinued the process of using generic user IDs and passwords to access the Consolidated Database. All users of the Consolidated | N/A - Finding has been corrected. |

Please note the original responses from the former lead agency (AWI) have been provided herein. No additional actions have been required of Florida's Office of Early Learning to date, as all issues have been addressed / resolved.

Office of Policy and Budget - July 2011

Fiscal Year 2012-13 LBR Technical Review Checklist

Department/Budget Entity (Service): Office of Early Learning

Agency Budget Officer/OPB Analyst Name: Michelle Morris/Janice Hatter

A "Y" indicates "YES" and is acceptable, an "N/J" indicates "NO/Justification Provided" - these require further explanation/justification (additional sheets can be used as necessary), and "TIPS" are other areas to consider.

| | |
|--------|---|
| | Program or Service (Budget Entity Codes) |
| Action | 48220400 |

1. GENERAL

| | |
|--|-----|
| 1.1 Are Columns A12, A04, A05, A36, A93, IA1, IA5, IP1, IV1, IV3 and NV1 set to TRANSFER CONTROL for DISPLAY status and MANAGEMENT CONTROL for UPDATE status for both the Budget and Trust Fund columns? Are Columns A06, A07, A08 and A09 for Fixed Capital Outlay (FCO) set to TRANSFER CONTROL for DISPLAY status only? (CSDI) | Yes |
| 1.2 Is Column A03 set to TRANSFER CONTROL for DISPLAY and UPDATE status for both the Budget and Trust Fund columns? (CSDI) | N/A |

AUDITS:

| | |
|--|-----|
| 1.3 Has Column A03 been copied to Column A12? Run the Exhibit B Audit Comparison Report to verify. (EXBR, EXBA) | N/A |
| 1.4 Has security been set correctly? (CSDR, CSA) | |
| TIP The agency should prepare the budget request for submission in this order: 1) Lock columns as described above; 2) copy Column A03 to Column A12; and 3) set Column A12 column security to ALL for DISPLAY status and MANAGEMENT CONTROL for UPDATE status. | N/A |

2. EXHIBIT A (EADR, EXA)

| | |
|---|-----|
| 2.1 Is the budget entity authority and description consistent with the agency's LRPP and does it conform to the directives provided on page 59 of the LBR Instructions? | Yes |
| 2.2 Are the statewide issues generated systematically (estimated expenditures, nonrecurring expenditures, etc.) included? | Yes |
| 2.3 Are the issue codes and titles consistent with <i>Section 3</i> of the LBR Instructions (pages 15 through 30)? Do they clearly describe the issue? | Yes |
| 2.4 Have the coding guidelines in <i>Section 3</i> of the LBR Instructions (pages 15 through 30) been followed? | Yes |

3. EXHIBIT B (EXBR, EXB)

| | |
|---|-----|
| 3.1 Is it apparent that there is a fund shift and were the issues entered into LAS/PBS correctly? Check D-3A funding shift issue 340XXX0 - a unique deduct and unique add back issue should be used to ensure fund shifts display correctly on the LBR exhibits. | N/A |
| 3.2 Are the 33XXXX0 issues negative amounts only and do not restore nonrecurring cuts from a prior year or fund any issues that net to a positive or zero amount? Check D-3A issues 33XXXX0 - a unique issue should be used for issues that net to zero or a positive amount. | Yes |

AUDITS:

| | |
|--|-----|
| 3.3 Negative Appropriation Category Audit for Agency Request (Columns A12 and A04): Are all appropriation categories positive by budget entity at the FSI level? Are all nonrecurring amounts less than requested amounts? (NACR, NAC - Report should print "No Negative Appropriation Categories Found") | Yes |
|--|-----|

| | | Program or Service (Budget Entity Codes) |
|------------------------------------|--|---|
| Action | | 48220400 |
| 3.4 | Current Year Estimated Verification Comparison Report: Is Column A02 equal to Column B07? (EXBR, EXBC - Report should print "Records Selected Net To Zero") | N/A |
| TIP | Generally look for and be able to fully explain significant differences between A02 and A03. | N/A |
| TIP | Exhibit B - A02 equal to B07: Compares Current Year Estimated column to a backup of A02. This audit is necessary to ensure that the historical detail records have not been adjusted. Records selected should net to zero. | N/A |
| TIP | Requests for appropriations which require advance payment authority must use the sub-title "Grants and Aids". For advance payment authority to local units of government, the Aid to Local Government appropriation category (05XXXX) should be used. For advance payment authority to non-profit organizations or other units of state government, the Special Categories appropriation category (10XXXX) should be used. | |
| 4. EXHIBIT D (EADR, EXD) | | |
| 4.1 | Is the program component objective statement consistent with the agency LRPP, and does it conform to the directives provided on page 62 of the LBR Instructions? | Yes |
| 4.2 | Is the program component code and title used correct? | Yes |
| TIP | Fund shifts or transfers of services or activities between program components will be displayed on an Exhibit D whereas it may not be visible on an Exhibit A. | |
| 5. EXHIBIT D-1 (ED1R, EXD1) | | |
| 5.1 | Are all object of expenditures positive amounts? (This is a manual check.) | Yes |
| AUDITS: | | |
| 5.2 | Do the fund totals agree with the object category totals within each appropriation category? (ED1R, XD1A - Report should print "No Differences Found For This Report") | Yes |
| 5.3 | FLAIR Expenditure/Appropriation Ledger Comparison Report: Is Column A01 less than Column B04? (EXBR, EXBB - Negative differences need to be corrected in Column A01.) | N/A |
| 5.4 | A01/State Accounts Disbursements and Carry Forward Comparison Report: Does Column A01 equal Column B08? (EXBR, EXBD - Differences need to be corrected in Column A01.) | N/A |
| TIP | If objects are negative amounts, the agency must make adjustments to Column A01 to correct the object amounts. In addition, the fund totals must be adjusted to reflect the adjustment made to the object data. | N/A |
| TIP | If fund totals and object totals do not agree or negative object amounts exist, the agency must adjust Column A01. | N/A |
| TIP | Exhibit B - A01 less than B04: This audit is to ensure that the disbursements and carry/certifications forward in A01 are less than FY 2010-11 approved budget. Amounts should be positive. | N/A |

| | |
|---|---|
| | Program or Service (Budget Entity Codes) |
| Action | 48220400 |
| TIP If B08 is not equal to A01, check the following: 1) the initial FLAIR disbursements or carry forward data load was corrected appropriately in A01; 2) the disbursement data from departmental FLAIR was reconciled to State Accounts; and 3) the FLAIR disbursements did not change after Column B08 was created. | N/A |
| 6. EXHIBIT D-3 (ED3R, ED3) (Not required in the LBR - for analytical purposes only.) | |
| 6.1 Are issues appropriately aligned with appropriation categories? | Yes |
| TIP Exhibit D-3 is no longer required in the budget submission but may be needed for this particular appropriation category/issue sort. Exhibit D-3 is also a useful report when identifying negative appropriation category problems. | |
| 7. EXHIBIT D-3A (EADR, ED3A) | |
| 7.1 Are the issue titles correct and do they clearly identify the issue? (See pages 15 through 30 of the LBR Instructions.) | Yes |
| 7.2 Does the issue narrative adequately explain the agency's request and is the explanation consistent with the LRPP? (See page 65 of the LBR Instructions.) | Yes |
| 7.3 Does the narrative for Information Technology (IT) issue follow the additional narrative requirements described on pages 69 through 70 of the LBR Instructions? | Yes |
| 7.4 Are all issues with an IT component identified with a "Y" in the "IT COMPONENT?" field? If the issue contains an IT component, has that component been identified and documented? | Yes |
| 7.5 Does the issue narrative explain any variances from the Standard Expense and Human Resource Services Assessments package? Is the nonrecurring portion in the nonrecurring column? (See pages E-4 and E-5 of the LBR Instructions.) | N/A |
| 7.6 Does the salary rate request amount accurately reflect any new requests and are the amounts proportionate to the Salaries and Benefits request? Note: Salary rate should always be annualized. | N/A |
| 7.7 Does the issue narrative thoroughly explain/justify all Salaries and Benefits amounts entered into the Other Salary Amounts transactions (OADA/C)? Amounts entered into OAD are reflected in the Position Detail of Salaries and Benefits section of the Exhibit D-3A. | N/A |
| 7.8 Does the issue narrative include the Consensus Estimating Conference forecast, where appropriate? | Yes |
| 7.9 Does the issue narrative reference the specific county(ies) where applicable? | Yes |
| 7.10 Do the 160XXX0 issues reflect budget amendments that have been approved (or in the process of being approved) and that have a recurring impact (including Lump Sums)? Have the approved budget amendments been entered in Column A18 as instructed in Memo #12-009? | N/A |
| 7.11 When appropriate are there any 160XXX0 issues included to delete positions placed in reserve in the OPB Position and Rate Ledger (e.g. unfunded grants)? Note: Lump sum appropriations not yet allocated should <u>not</u> be deleted. (PLRR, PLMO) | N/A |
| 7.12 Does the issue narrative include plans to satisfy additional space requirements when requesting additional positions? | N/A |

| | Program or Service (Budget Entity Codes) |
|---|---|
| Action | 48220400 |
| 7.13 Has the agency included a 160XXX0 issue and 210XXXX and 260XXX0 issues as required for lump sum distributions? | N/A |
| 7.14 Do the amounts reflect appropriate FSI assignments? | Yes |
| 7.15 Do the issues relating to <i>salary and benefits</i> have an "A" in the fifth position of the issue code (XXXXAXX) and are they self-contained (not combined with other issues)? (See page 29 and 88 of the LBR Instructions.) | N/A |
| 7.16 Do the issues relating to <i>Information Technology (IT)</i> have a "C" in the sixth position of the issue code (36XXXXCX) and are the correct issue codes used (361XXC0, 362XXC0, 363XXC0, 17C01C0, 17C02C0, 17C03C0, 24010C0, 33001C0 or 55C01C0)? Have the correct issue codes been used for the Statewide Email Consolidation (17C10C0, 17C11C0, 17C14C0, 33015C0 and 55C04C0) | Yes |
| 7.17 Are the issues relating to <i>major audit findings and recommendations</i> properly coded (4A0XXX0, 4B0XXX0)? | N/A |
| AUDIT: | |
| 7.18 Are all FSI's equal to '1', '2', '3', or '9'? There should be no FSI's equal to '0'. (EADR, FSIA - Report should print "No Records Selected For Reporting") | Yes |
| 7.19 Does the General Revenue for 160XXXX (Adjustments to Current Year Expenditures) issues net to zero? (GENR, LBR1) | N/A |
| 7.20 Does the General Revenue for 180XXXX (Intra-Agency Reorganizations) issues net to zero? (GENR, LBR2) | N/A |
| 7.21 Does the General Revenue for 200XXXX (Estimated Expenditures Realignment) issues net to zero? (GENR, LBR3) | N/A |
| 7.22 Have FCO appropriations been entered into the nonrecurring column A04? (GENR, LBR4 - Report should print "No Records Selected For Reporting" or a listing of D-3A issue(s) assigned to Debt Service (IOE N) or in some cases State Capital Outlay - Public Education Capital Outlay (IOE L)) | N/A |
| TIP Salaries and Benefits amounts entered using the OADA/C transactions must be thoroughly justified in the D-3A issue narrative. Agencies can run OADA/OADR from STAM to identify the amounts entered into OAD and ensure these entries have been thoroughly explained in the D-3A issue narrative. | |
| TIP The issue narrative must completely and thoroughly explain and justify each D-3A issue. Agencies must ensure it provides the information necessary for the OPB and legislative analysts to have a complete understanding of the issue submitted. Thoroughly review pages 67 through 71 of the LBR Instructions. | |
| TIP Check BAPS to verify status of budget amendments. Check for reapprovals not picked up in the General Appropriations Act. Verify that Lump Sum appropriations in Column A02 do not appear in Column A03. Review budget amendments to verify that 160XXX0 issue amounts correspond accurately and net to zero for General Revenue funds. | |

| | |
|--|---|
| | Program or Service (Budget Entity Codes) |
| Action | 48220400 |
| TIP If an agency is receiving federal funds from another agency the FSI should = 9 (Transfer - Recipient of Federal Funds). The agency that originally receives the funds directly from the federal agency should use FSI = 3 (Federal Funds). | |
| TIP If an appropriation made in the FY 2011-12 General Appropriations Act duplicates an appropriation made in substantive legislation, the agency must create a unique deduct nonrecurring issue to eliminate the duplicated appropriation. Normally this is taken care of through line item veto. | N/A |
| 8. SCHEDULE I & RELATED DOCUMENTS (SC1R, SC1 - Budget Entity Level or SC1R, SC1D - Department Level) | |
| 8.1 Has a separate department level Schedule I and supporting documents package been submitted by the agency? | Yes |
| 8.2 Has a Schedule I and Schedule IB been completed in LAS/PBS for each operating trust fund? | Yes |
| 8.3 Have the appropriate Schedule I supporting documents been included for the trust funds (Schedule IA, Schedule IC, and Reconciliation to Trial Balance)? | N/A |
| 8.4 Have the Examination of Regulatory Fees Part I and Part II forms been included for the applicable regulatory programs? | N/A |
| 8.5 Have the required detailed narratives been provided (5% trust fund reserve narrative; method for computing the distribution of cost for general management and administrative services narrative; adjustments narrative; revenue estimating methodology narrative)? | N/A |
| 8.6 Has the Inter-Agency Transfers Reported on Schedule I form been included as applicable for transfers totaling \$100,000 or more for the fiscal year? Including transfers required due to the implementation of Chapter 2011-142, LOF. | Yes |
| 8.7 If the agency is scheduled for the annual trust fund review this year, have the Schedule ID and applicable draft legislation been included for recreation, modification or termination of existing trust funds? | N/A |
| 8.8 If the agency is scheduled for the annual trust fund review this year, have the necessary trust funds been requested for creation pursuant to <i>section 215.32(2)(b), Florida Statutes</i> - including the Schedule ID and applicable legislation? | N/A |
| 8.9 Are the revenue codes correct? In the case of federal revenues, has the agency appropriately identified direct versus indirect receipts (object codes 000700, 000750, 000799, 001510 and 001599)? For non-grant federal revenues, is the correct revenue code identified (codes 000504, 000119, 001270, 001870, 001970)? | Yes |
| 8.10 Are the statutory authority references correct? | Yes |
| 8.11 Are the General Revenue Service Charge percentage rates used for each revenue source correct? (Refer to Chapter 2009-78, Laws of Florida, for appropriate general revenue service charge percentage rates.) | N/A |
| 8.12 Is this an accurate representation of revenues based on the most recent Consensus Estimating Conference forecasts? | N/A |
| 8.13 If there is no Consensus Estimating Conference forecast available, do the revenue estimates appear to be reasonable? | Yes |
| 8.14 Are the federal funds revenues reported in Section I broken out by individual grant? Are the correct CFDA codes used? | Yes |

| | Program or Service (Budget Entity Codes) |
|---|---|
| Action | 48220400 |
| 8.15 Are anticipated grants included and based on the state fiscal year (rather than federal fiscal year)? | Yes |
| 8.16 Are the Schedule I revenues consistent with the FSI's reported in the Exhibit D-3A? | Yes |
| 8.17 If applicable, are nonrecurring revenues entered into Column A04? | Yes |
| 8.18 Has the agency certified the revenue estimates in columns A02 and A12 to be the latest and most accurate available? Does the certification include a statement that the agency will notify OPB of any significant changes in revenue estimates that occur prior to the Governor's Budget Recommendations being issued? | Yes |
| 8.19 Is a 5% trust fund reserve reflected in Section II? If not, is sufficient justification provided for exemption? Are the additional narrative requirements provided? | N/A |
| 8.20 Are appropriate service charge nonoperating amounts included in Section II? Including transfers required due to the implementation of Chapter 2011-142, | N/A |
| 8.21 Are nonoperating expenditures to other budget entities/departments cross-referenced accurately? | Yes |
| 8.22 Do transfers balance between funds (within the agency as well as between agencies)? (See also 8.6 for required transfer confirmation of amounts totaling \$100,000 or more.) | Yes |
| 8.23 Are nonoperating expenditures recorded in Section II and adjustments recorded in Section III? | Yes |
| 8.24 Are prior year September operating reversions appropriately shown in column A01? | N/A |
| 8.25 Are current year September operating reversions appropriately shown in column A02? DUE TO THE EARLY SUBMISSION DATE OF THE 2012-13 LBR, CERTIFIED FORWARD REVERSIONS AT 9/30/11 WILL NEED TO BE ADDED BY AGENCIES DURING THE TECHNICAL REVIEW PERIOD. | N/A |
| 8.26 Does the Schedule IC properly reflect the unreserved fund balance for each trust fund as defined by the LBR Instructions, and is it reconciled to the agency accounting records? | N/A |
| 8.27 Does Column A01 of the Schedule I accurately represent the actual prior year accounting data as reflected in the agency accounting records, and is it provided in sufficient detail for analysis? | N/A |
| 8.28 Does Line I of Column A01 (Schedule I) equal Line K of the Schedule IC? | N/A |
| AUDITS: | |
| 8.29 Is Line I a positive number? (If not, the agency must adjust the budget request to eliminate the deficit). | Yes |
| 8.30 Is the June 30 Adjusted Unreserved Fund Balance (Line I) equal to the July 1 Unreserved Fund Balance (Line A) of the following year? If a Schedule IB was prepared, do the totals agree with the Schedule I, Line I? (SC1R, SC1A - Report should print "No Discrepancies Exist For This Report") | N/A |
| 8.31 Has a Department Level Reconciliation been provided for each trust fund and does Line A of the Schedule I equal the CFO amount? If not, the agency must correct Line A. (SC1R, DEPT) | N/A |

| | Program or Service (Budget Entity Codes) |
|--|--|
| Action | 48220400 |
| TIP The Schedule I is the most reliable source of data concerning the trust funds. It is very important that this schedule is as accurate as possible! | |
| TIP Determine if the agency is scheduled for trust fund review. (See page 125 of the LBR Instructions.) | |
| TIP Review the unreserved fund balances and compare revenue totals to expenditure totals to determine and understand the trust fund status. | |
| TIP Typically nonoperating expenditures and revenues should not be a negative number. Any negative numbers must be fully justified. | |
| 9. SCHEDULE II (PSCR, SC2) | |
| AUDIT: | |
| 9.1 Is the pay grade minimum for salary rate utilized for positions in segments 2 and 3? (BRAR, BRAA - Report should print "No Records Selected For This Request") Note: Amounts other than the pay grade minimum should be fully justified in the D-3A issue narrative. (See <i>Base Rate Audit</i> on page 157 of the LBR Instructions.) | N/A - position data was not loaded due to timing of reorganization |
| 10. SCHEDULE III (PSCR, SC3) | |
| 10.1 Is the appropriate lapse amount applied in Segment 3? (See page 90 of the LBR Instructions.) | N/A - position data was not loaded due to timing of |
| 10.2 Are amounts in <i>Other Salary Amount</i> appropriate and fully justified? (See page 97 of the LBR Instructions for appropriate use of the OAD transaction.) Use OADI or OADR to identify agency other salary amounts requested. | N/A - position data was not loaded due to timing of reorganization |
| 11. SCHEDULE IV (EADR, SC4) | |
| 11.1 Are the correct Information Technology (IT) issue codes used? | Yes |
| TIP If IT issues are not coded correctly (with "C" in 6th position), they will not appear in the Schedule IV. | |
| 12. SCHEDULE VIIIA (EADR, SC8A) | |
| 12.1 Is there only one #1 priority, one #2 priority, one #3 priority, etc. reported on the Schedule VIII-A? Are the priority narrative explanations adequate? | Yes |
| 13. SCHEDULE VIIIB-1 (EADR, S8B1) | |
| 13.1 NOT REQUIRED FOR THIS YEAR | N/A |
| 14. SCHEDULE VIIIB-2 (EADR, S8B2) | |
| 14.1 Do the reductions comply with the instructions provided on pages 102 through 104 of the LBR Instructions regarding a 10% reduction in recurring General Revenue and Trust Funds, including the verification that the 33BXXX0 issue has not been used? | Yes |
| 15. SCHEDULE XI (LAS/PBS Web - see page 105 of the LBR Instructions for detailed instructions) | |
| 15.1 Agencies are required to generate this spreadsheet via the LAS/PBS Web. The Final Excel version on longer has to be submitted to OPB for inclusion on the Governor's Florida Performs Website. (Note: Pursuant to <i>section 216.023(4) (b), Florida Statutes</i> , the Legislature can reduce the funding level for any agency that does not provide this information.) | N/A |
| 15.2 Do the PDF files uploaded to the Florida Fiscal Portal for the LRPP and LBR match? | N/A |
| AUDITS INCLUDED IN THE SCHEDULE XI REPORT: | |
| 15.3 Does the FY 2010-11 Actual (prior year) Expenditures in Column A36 reconcile to Column A01? (GENR, ACT1) | N/A |

| | Program or Service (Budget Entity Codes) |
|---|--|
| Action | 48220400 |
| 15.4 None of the executive direction, administrative support and information technology statewide activities (ACT0010 thru ACT0490) have output standards (Record Type 5)? (Audit #1 should print "No Activities Found") | N/A |
| 15.5 Does the Fixed Capital Outlay (FCO) statewide activity (ACT0210) only contain 08XXXX or 14XXXX appropriation categories? (Audit #2 should print "No Operating Categories Found") | N/A |
| 15.6 Has the agency provided the necessary standard (Record Type 5) for all activities which <u>should</u> appear in Section II? (Note: Audit #3 will identify those activities that do NOT have a Record Type '5' and have not been identified as a 'Pass Through' activity. These activities will be displayed in Section III with the 'Payment of Pensions, Benefits and Claims' activity and 'Other' activities. Verify if these activities should be displayed in Section III. If not, an output standard would need to be added for that activity and the Schedule XI submitted again.) | N/A |
| 15.7 Does Section I (Final Budget for Agency) and Section III (Total Budget for Agency) equal? (Audit #4 should print "No Discrepancies Found") | N/A |
| TIP If Section I and Section III have a small difference, it may be due to rounding and therefore will be acceptable. | |
| 16. MANUALLY PREPARED EXHIBITS & SCHEDULES | |
| 16.1 Do exhibits and schedules comply with LBR Instructions (pages 110 through 154 of the LBR Instructions), and are they accurate and complete? | Yes. The Office of Early Learning will be providing an update to its current Schedule IV-B submission at a later time in order to best reflect the status of the project. The Office of Early Learning does not have any data to report for the following schedules: Schedule IV-C (Recurring IT Budget Planning), Schedule VI (Debt Service), Schedule VII (Litigation Inventory), Schedule XI (Unit Cost Summary), Schedule XII (Outsourcing and Privatization initiatives), Schedule XIII (Consolidated Financing of Deferred payment commodity contracts), and Schedule XV |
| 16.2 Are appropriation category totals comparable to Exhibit B, where applicable? | Yes |
| 16.3 Are agency organization charts (Schedule X) provided and at the appropriate level of detail? | Yes |
| AUDITS - GENERAL INFORMATION | |
| TIP Review <i>Section 6: Audits</i> of the LBR Instructions (pages 156-158) for a list of audits and their descriptions. | |

| | | |
|---|--|-----|
| | Program or Service (Budget Entity Codes) | |
| Action | 48220400 | |
| TIP | Reorganizations may cause audit errors. Agencies must indicate that these errors are due to an agency reorganization to justify the audit error. | |
| 17. CAPITAL IMPROVEMENTS PROGRAM (CIP) | | |
| 17.1 | Are the CIP-2, CIP-3, CIP-A and CIP-B forms included? | N/A |
| 17.2 | Are the CIP-4 and CIP-5 forms submitted when applicable (see CIP Instructions)? | N/A |
| 17.3 | Do all CIP forms comply with CIP Instructions where applicable (see CIP Instructions)? | N/A |
| 17.4 | Does the agency request include 5 year projections (Columns A12, A06, A07, A08 and A09)? | N/A |
| 17.5 | Are the appropriate counties identified in the narrative? | N/A |
| 17.6 | Has the CIP-2 form (Exhibit B) been modified to include the agency priority for each project and the modified form saved as a PDF document? | N/A |
| TIP | Requests for Fixed Capital Outlay appropriations which are Grants and Aids to Local Governments and Non-Profit Organizations must use the Grants and Aids to Local Governments and Non-Profit Organizations - Fixed Capital Outlay major appropriation category (140XXX) and include the sub-title "Grants and Aids". These appropriations utilize a CIP-B form as justification. | |
| 18. FLORIDA FISCAL PORTAL | | |
| 18.1 | Have all files been assembled correctly and posted to the Florida Fiscal Portal as outlined in the Florida Fiscal Portal Submittal Process? | Yes |
| 19. CREATION OF DEPARTMENT OF ECONOMIC OPPORTUNITY (DEO) | | |
| 19.1 | <p>If you are an agency that no longer exists or is transferred to DEO after the approval of the reorganization by the Legislative Budget Commission (LBC), have you submitted the following schedules, as applicable:</p> <ul style="list-style-type: none"> • Schedule I: Trust Funds Available and Schedule IB -DEPARTMENT LEVEL • Schedule IA: Detail of Fees and Related Costs (Part I and Part II) • Schedule IC: Reconciliation of Unreserved Fund Balances • Reconciliation: Beginning Trial Balance to Schedule I and IC • Exhibit D-1: Detail of Expenses • Schedule XI: Agency-Level Unit Cost Summary • Opening Trial Balance as of July 1, 2011 • Schedule I Narratives related to Column A01 • Inter-Agency Transfer Form | N/A |