

COMMISSIONERS:  
ART GRAHAM, CHAIRMAN  
LISA POLAK EDGAR  
RONALD A. BRISÉ  
EDUARDO E. BALBIS  
JULIE I. BROWN

STATE OF FLORIDA



EXECUTIVE DIRECTOR  
BRAULIO L. BAEZ  
(850) 413-6463

## Public Service Commission

October 13, 2014

Cynthia Kelly, Director  
Office of Policy and Budget  
Executive Office of the Governor  
1701 Capitol  
Tallahassee, Florida 32399-0001

JoAnne Leznoff, Staff Director  
House Appropriations Committee  
221 Capitol  
Tallahassee, Florida 32399-1300

Cindy Kynoch, Staff Director  
Senate Committee on Appropriations  
201 Capitol  
Tallahassee, Florida 32399-1300

Dear Directors:

Pursuant to Chapter 216, *Florida Statutes*, our Legislative Budget Request for the Public Service Commission is submitted in the format prescribed in the budget instructions. The information provided electronically and contained herein is a true and accurate presentation of our proposed needs for the 2015-16 Fiscal Year. This submission has been approved by the Commissioners.

Sincerely,

A handwritten signature in blue ink, appearing to read "Braulio L. Baez".

Braulio L. Baez  
Executive Director

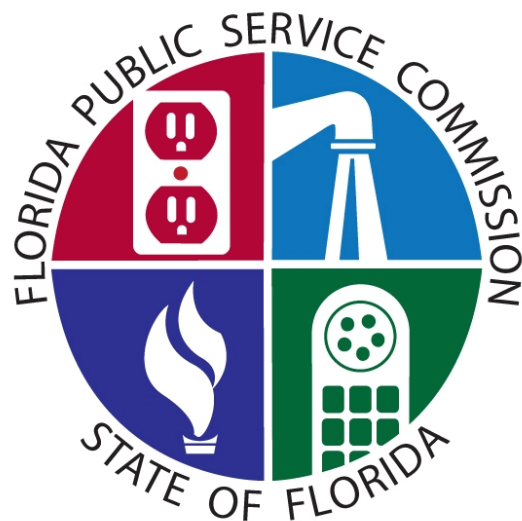
BLB/pq

## Temporary Special Duty - General Pay Additives Implementation Plan for Fiscal Year 2015-2016

Type of Pay Additive	Description	Justification	Initially in Effect	Period in Effect	Monthly Amount	Position Class	County	# of Positions	Historical Data		Est. Annual Cost	Collective Bargaining?
									Origin *	# of Pos. Prior FY		
<b>Competitive Area Differential (CAD)</b>	A Competitive Area Differential (CAD) is a pay additive for a class based on geographical, localized recruitment, turnover or competitive pay issues.	Approved class within the approved geographical area.	1st day of employment in the approved class.	Duration of employment in the approved class.	\$ 105.83	Staff Assistant	Dade	1	12/31/83	1	\$ 1,269.96	No
					\$ 105.83	Prof. Acct. Spec.	Dade	3	12/31/83	3	\$ 3,809.88	No
					\$ 164.75	Eng Spec I	Dade	1	12/31/83	1	\$ 1,977.00	No
					\$ 164.75	Eng Spec II	Dade	2	12/31/83	0	\$ 3,954.00	No
					\$ 164.75	Eng Spec IV	Dade	2	12/31/83	2	\$ 3,954.00	No
					\$ 39.92	Eng Spec I	Hillsborough	1	12/31/83	1	\$ 479.04	No
												<b>10</b>

\* The PSC, in conjunction with the Dept. of Management Services, estimate that Competitive Area Differentials have been in place for 20-30 years. The oldest known occurrence according to records available to the PSC was December 31, 1983.

# Florida Public Service Commission



## Department Level Exhibits and Schedules

610000 PUBLIC SERVICE COMMISSION		BEGINNING BALANCE
50 2 573003 REGULATORY TRUST FUND PSC		
G-L	G-L ACCOUNT NAME	
CAT		BEGINNING BALANCE
11100	CASH ON HAND	
000000	BALANCE BROUGHT FORWARD	200.00
12100	UNRELEASED CASH IN STATE TREASURY	
000000	BALANCE BROUGHT FORWARD	5,025,549.39
14100	POOLED INVESTMENTS WITH STATE TREASURY	
000000	BALANCE BROUGHT FORWARD	0.00
15300	INTEREST AND DIVIDENDS RECEIVABLE	
000000	BALANCE BROUGHT FORWARD	0.00
000500	INTEREST	0.00
	** GL 15300 TOTAL	0.00
27600	FURNITURE AND EQUIPMENT	
000000	BALANCE BROUGHT FORWARD	5,695.00
000400	MISCELLANEOUS RECEIPTS	0.00
001800	REFUNDS	25,955.50-
040000	EXPENSES	3,942.66
060000	OPERATING CAPITAL OUTLAY	2,189,458.19
060000	CF OPERATING CAPITAL OUTLAY	19,066.48
100021	ACQUISITION/MOTOR VEHICLES	357,913.95
103823	CATEGORY NAME NOT ON TITLE FILE	7,241.00
105890	CATEGORY NAME NOT ON TITLE FILE	0.00
109910	STATE OPERATIONS-ARRA 2009	1,578.91
	** GL 27600 TOTAL	2,558,940.69
27700	ACC DEPR - FURNITURE & EQUIPMENT	
000000	BALANCE BROUGHT FORWARD	354,782.08
000400	MISCELLANEOUS RECEIPTS	0.00
001800	REFUNDS	22,781.79
040000	EXPENSES	3,942.66-
060000	OPERATING CAPITAL OUTLAY	1,660,226.29-
100021	ACQUISITION/MOTOR VEHICLES	341,713.43-
103823	CATEGORY NAME NOT ON TITLE FILE	7,241.00-
105890	CATEGORY NAME NOT ON TITLE FILE	0.00
109910	STATE OPERATIONS-ARRA 2009	1,030.66-
	** GL 27700 TOTAL	1,636,590.17-
31100	ACCOUNTS PAYABLE	
010000	SALARIES AND BENEFITS	0.00
010000	CF SALARIES AND BENEFITS	2,026.05-
030000	OTHER PERSONAL SERVICES	0.00
030000	CF OTHER PERSONAL SERVICES	1,608.00-
040000	EXPENSES	6,534.08-

610000 PUBLIC SERVICE COMMISSION  
 50 2 573003 REGULATORY TRUST FUND PSC  
 G-L G-L ACCOUNT NAME

CAT		BEGINNING BALANCE
040000	CF EXPENSES	24,942.29-
100777	CONTRACTED SERVICES	0.00
100777	CF CONTRACTED SERVICES	16,141.29-
210014	OTHER DATA PROCESSING SVCS	0.00
210014	CF OTHER DATA PROCESSING SVCS	2,621.36-
210021	SOUTHWOOD SRC	0.00
** GL 31100 TOTAL		53,873.07-
31120	ACCOUNTS PAYABLE OVERSTATED	
060000	OPERATING CAPITAL OUTLAY	0.00
35300	DUE TO OTHER DEPARTMENTS	
000000	BALANCE BROUGHT FORWARD	0.00
010000	SALARIES AND BENEFITS	0.00
040000	EXPENSES	6,534.08
040000	CF EXPENSES	28,791.66-
100777	CONTRACTED SERVICES	0.00
100777	CF CONTRACTED SERVICES	106.40-
210014	OTHER DATA PROCESSING SVCS	0.00
210021	SOUTHWOOD SRC	0.00
210021	CF SOUTHWOOD SRC	409.14-
** GL 35300 TOTAL		22,773.12-
35600	DUE TO GENERAL REVENUE	
000000	BALANCE BROUGHT FORWARD	0.00
310322	SERVICE CHARGE TO GEN REV	25,501.08-
** GL 35600 TOTAL		25,501.08-
38500	INSTALLMENT PURCHASE CONTRACTS	
000000	BALANCE BROUGHT FORWARD	0.00
38600	CURRENT COMPENSATED ABSENCES LIABILITY	
000000	BALANCE BROUGHT FORWARD	809,833.74-
48500	INSTALLMENT PURCHASE CONTRACTS	
000000	BALANCE BROUGHT FORWARD	0.00
48600	COMPENSATED ABSENCES LIABILITY	
000000	BALANCE BROUGHT FORWARD	2,068,142.52-
51100	GENERAL LEDGER NAME NOT ON FILE	
000000	BALANCE BROUGHT FORWARD	947,925.09
060000	OPERATING CAPITAL OUTLAY	860,697.14-
100021	ACQUISITION/MOTOR VEHICLES	84,581.44-
109910	STATE OPERATIONS-ARRA 2009	2,646.51-
** GL 51100 TOTAL		0.00

610000 PUBLIC SERVICE COMMISSION		BEGINNING BALANCE
50 2 573003	REGULATORY TRUST FUND PSC	
G-L	G-L ACCOUNT NAME	
CAT		
53600	INVESTED IN CAPITAL ASSETS NET OF RELA	
000000	BALANCE BROUGHT FORWARD	922,350.52-
53900	NET ASSETS UNRESTRICTED	
000000	BALANCE BROUGHT FORWARD	2,045,625.86-
94100	ENCUMBRANCES	
040000	CF EXPENSES	8,604.33
98100	BUDGETARY FND BAL RESERVED/ENCUMBRANCE	
040000	CF EXPENSES	8,604.33-
	*** FUND TOTAL	0.00

## SCHEDULE I – REQUIRED NARRATIVES

**Budget Period: 2015-16**

**Agency:** Florida Public Service Commission (PSC)  
**Trust Fund:** Regulatory Trust Fund  
**Fund No.:** 2573

### **5% Trust Fund Reserve:**

The PSC’s Regulatory Trust Fund receives no revenues that are excluded in the General Policy Guidelines section of the Legislative Budget Instructions. There is no negative impact of establishing the reserve in this LBR. Revenues are collected primarily only twice per year, but the majority of expenditures are paid out monthly (salaries/benefits make up the largest single amount, plus other routine costs of doing business) or quarterly (rent to DMS). Therefore, the trust fund balance must be sufficient to allow for this uneven cash flow.

FY 14-15 total revenue	\$25,475,155
Less 8% Service Charge to GR	(2,038,012)
Less Risk Management Casualty Insurance	(62,065)
Less Operating Transfer to DMS STW Contract	<u>(97,826)</u>
Total Revenue Subject to 5% Reserve Calculation	<u>\$23,277,252</u>
Multiplied by 5%	<u>.05</u>
Total 5% Reserve for Regulatory Trust Fund	<u>\$ 1,163,863</u>

### **Section III Adjustments:**

Adjustments are included for FY 2013-14 as listed on the “Reconciliation of Schedule 1C to Agency Trial Balance” form.

### **Revenue Estimating Methodology:**

The trust fund’s primary revenues are from the regulatory assessment fees (RAFs) charged to the utilities regulated by the PSC. Maximum allowable rates are established in Florida Statutes, and actual assessable rates, up to the statutory cap, are established by PSC rule in the Florida Administrative Code. RAFs are computed on the utility companies’ gross operating revenues derived from intrastate business, which must be estimated for the current year (Column A02) and the request year (Column A03). The PSC’s revenue forecast is based on near-term company

Schedule 1 Required Narratives

projections, when available, and past year growth rates when projections are not available. The projections also take into account relevant developments in the various industries that will affect the utilities' revenue.

The 2014 and 2015 investor-owned electric RAF revenues are based on actual revenues and projected revenue growth. The projected 2014 RAF revenue is a combination of the investor-owned electric utilities actual RAF revenues for the first half of the year and company projections for the second half of the year. Significant revenue growth during the first half of the year, relative to the revenue of the first half of 2013, is projected to continue throughout the remainder of the year. For 2015, RAF revenues are based on company projections.

The RAF revenue projections are consistent with company sales growth estimates for the four largest investor-owned electric utilities as well as the 2013 and 2014 increases in base rates approved for all five investor-owned electric utilities by the Commission. The state's largest investor-owned electric utility implemented base rate increases in 2013 and 2014. The four other investor-owned electric utilities have or will implement one or more base rate increases during the period of 2013 to 2015.

For municipal and rural electrics, 2014 and 2015 RAF revenues are forecasted based on the projected gigawatt hours sales growth rate of the investor-owned utilities.

Except for two small gas utilities, the 2014 and 2015 RAF revenue estimates of the investor-owned gas utilities are based on actual revenues and projected revenue growth. The projected 2014 RAF revenues of the five larger investor-owned gas utilities are based on the actual RAF revenues for the first half of the year and company projections for the second half of the year. The projected 2015 RAF revenues for the five larger utilities are based on company projections. The PSC projects the RAF revenues for the two small gas utilities based on a five year average.

With respect to the municipal gas and gas districts (gas safety entities), the growth rate in 2014 and 2015 RAF revenue are projected to be equal to the growth rate of the gas utilities during those years. The two revenue data series have a history of following a similar trend with a relatively high positive correlation in annual revenue between the gas utilities and municipal and gas districts. We anticipate that trend to continue.

The Commission has two gas pipelines under its jurisdiction. The projected 2014 RAF revenue of the gas pipelines is based on the actual RAF revenues for the first half of the year and company projections for the second half of the year. The projected RAF revenue for 2015 is based on company revenue projections for the two pipelines.

Telecommunications companies' revenues have been decreasing mainly due to a loss of access lines to wireless and other non-regulated companies that do not pay RAFs. The 2014-2015 RAFs are expected to decline based on the actual historical decline in RAF revenues and a



review of the actual Revenues for the first half of 2014. This same negative growth is expected to continue in 2015.

Despite the inclusion of nominal projected growth, the water and wastewater industry revenue forecast for 2014-2015 shows a decline. The decline is the result of the majority of water and wastewater systems of the state's largest regulated water and wastewater utility being sold to governmental entities. The remaining systems are predicted to grow at a slightly slower rate for 2014 (1.5 percent) than in prior years. The 2015 projection includes a slightly lower growth rate (1.0 percent) than for 2014 for existing companies and the RAF amount is adjusted as well for the transfer of an additional system to a governmental entity.

The revenue estimates are the latest we have available, but we will be monitoring and looking at the revenues again after our January 2015 collections. We will notify OPB of any significant changes in revenue estimates that occur prior to the Governor's Budget Recommendations.

**Computing Distribution of Cost for General Management and Administrative Services:**

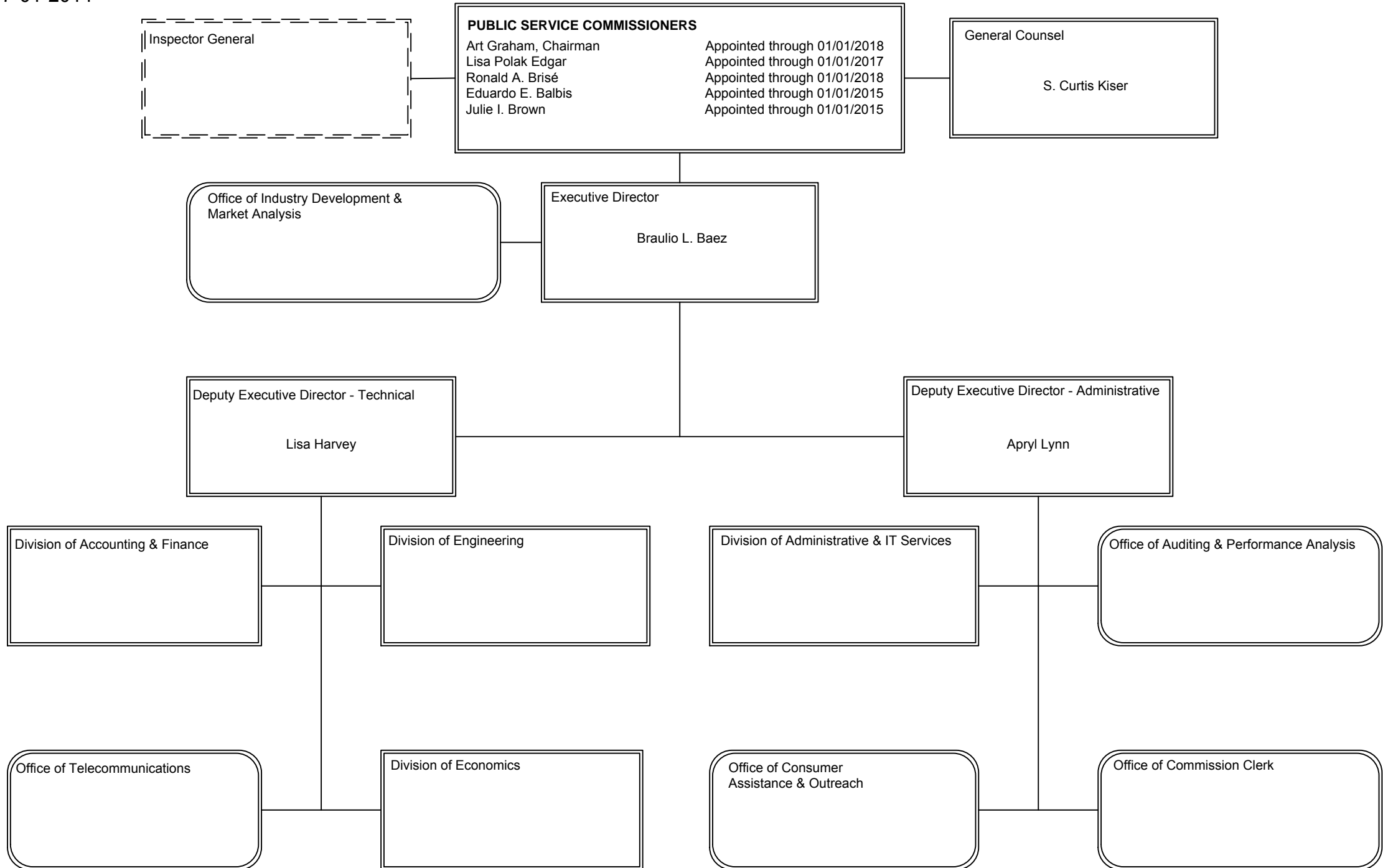
Indirect costs for purposes of the Schedule 1A are derived from the People First time accounting component based on work hour "charge objects."

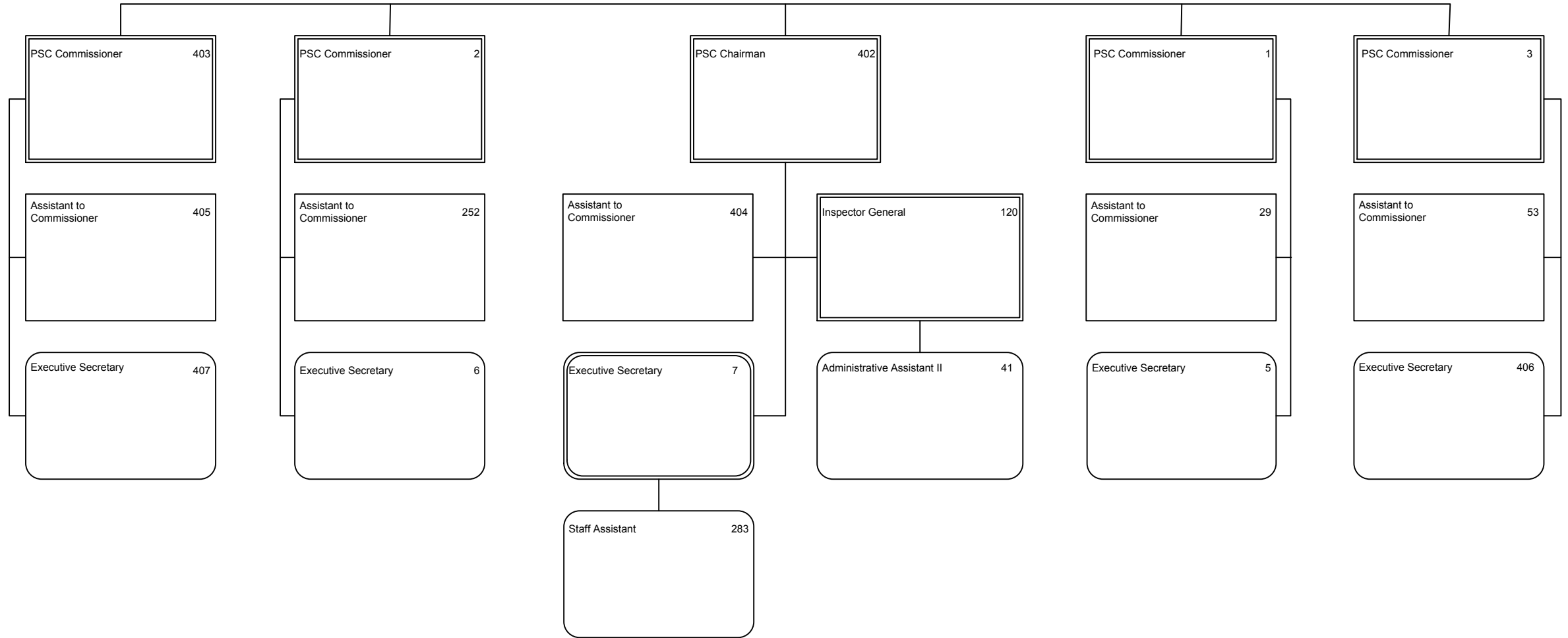
## Schedule VII: Agency Litigation Inventory

*For directions on completing this schedule, please see the “Legislative Budget Request (LBR) Instructions” located on the Governor’s website.*

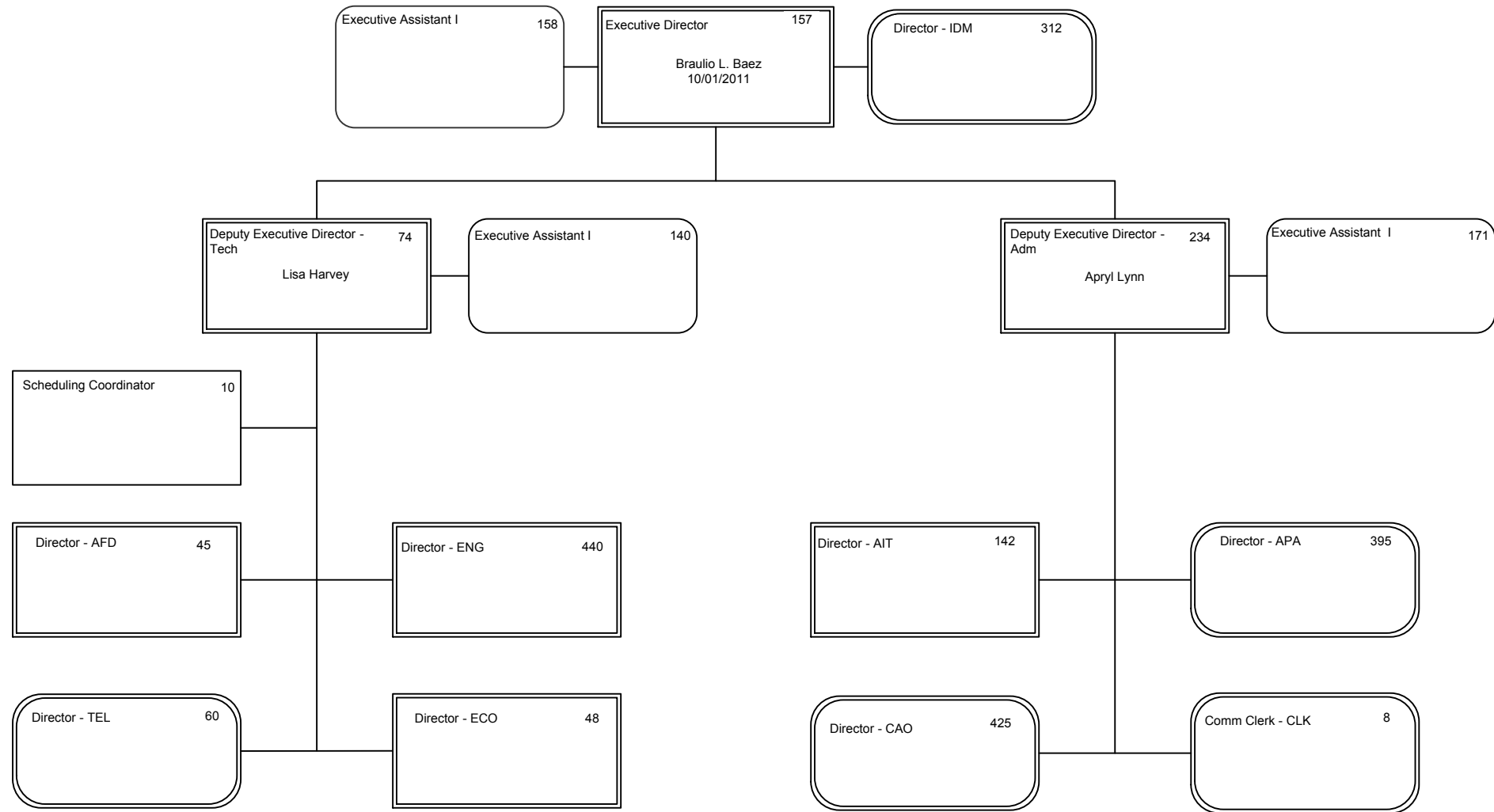
<b>Agency:</b>	<a href="#"><u>Florida Public Service Commission</u></a>		
<b>Contact Person:</b>	<a href="#"><u>Mary Anne Helton</u></a>	<b>Phone Number:</b>	<a href="#"><u>850-413-6096</u></a>
<b>Names of the Case: (If no case name, list the names of the plaintiff and defendant.)</b>	<a href="#"><u>N/A</u></a>		
<b>Court with Jurisdiction:</b>			
<b>Case Number:</b>			
<b>Summary of the Complaint:</b>			
<b>Amount of the Claim:</b>	\$		
<b>Specific Statutes or Laws (including GAA) Challenged:</b>			
<b>Status of the Case:</b>			
<b>Who is representing (of record) the state in this lawsuit? Check all that apply.</b>		Agency Counsel	
		Office of the Attorney General or Division of Risk Management	
		Outside Contract Counsel	
<b>If the lawsuit is a class action (whether the class is certified or not), provide the name of the firm or firms representing the plaintiff(s).</b>			

# FLORIDA PUBLIC SERVICE COMMISSION

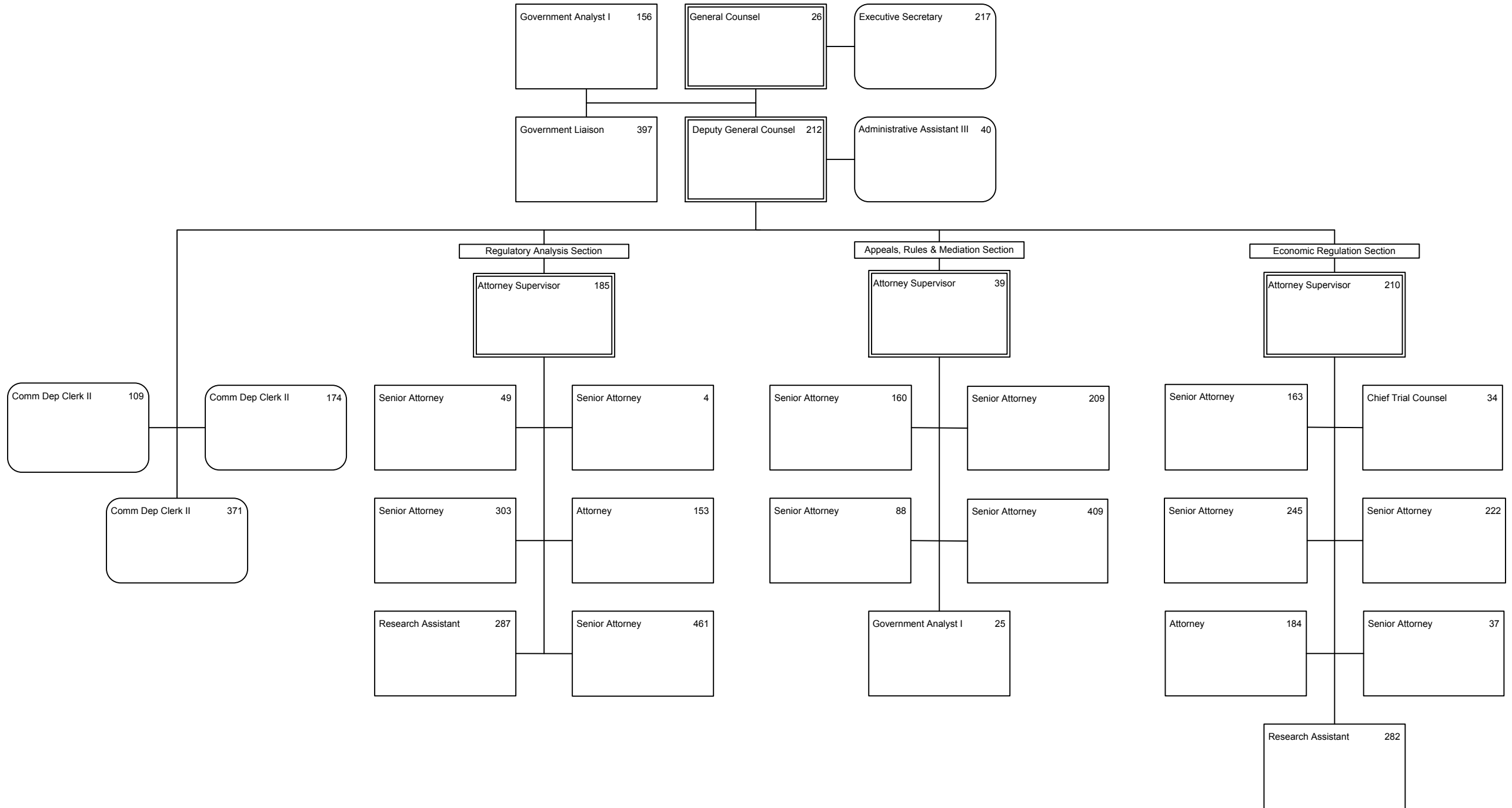




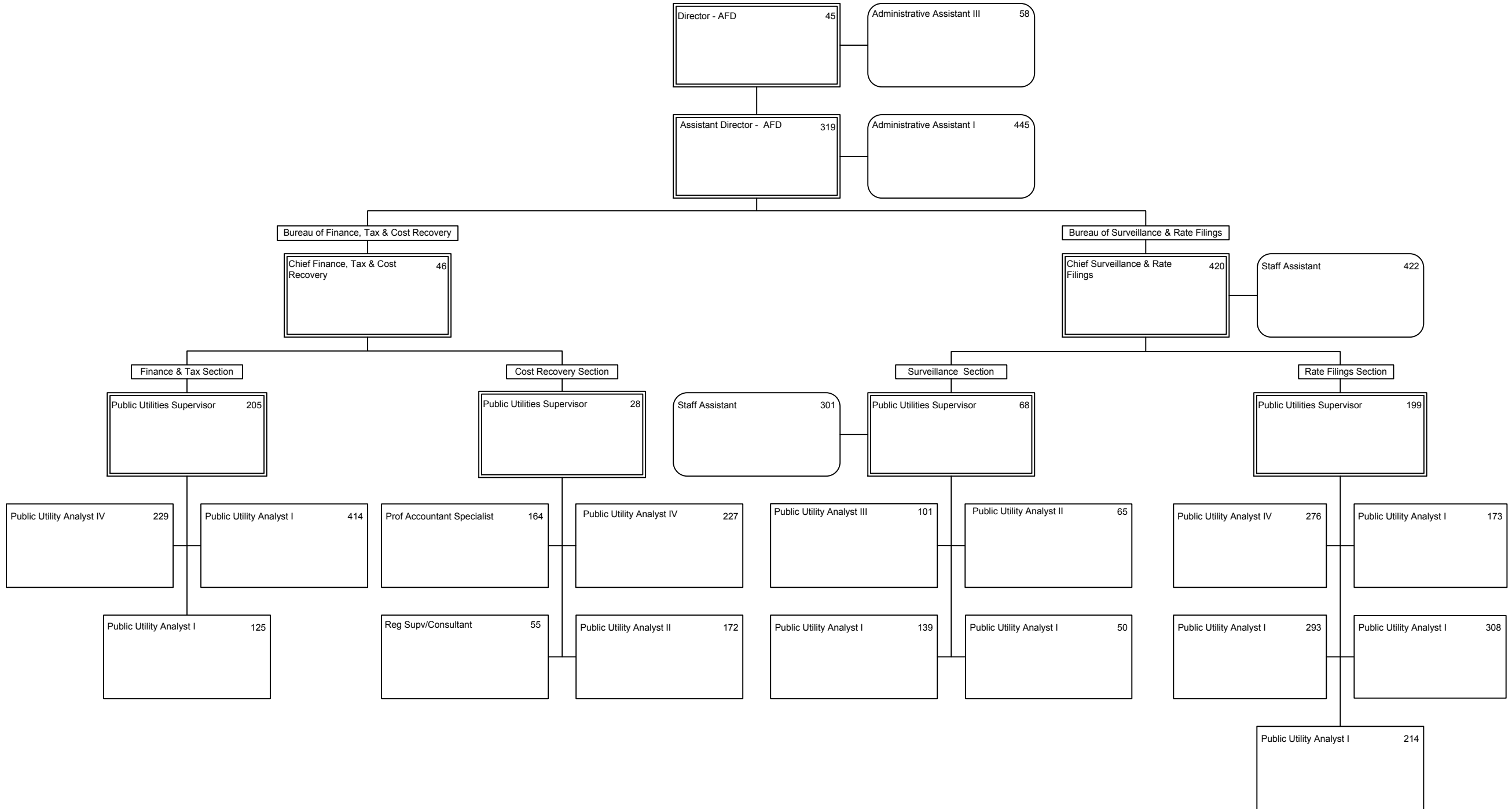
# Office of Executive Director



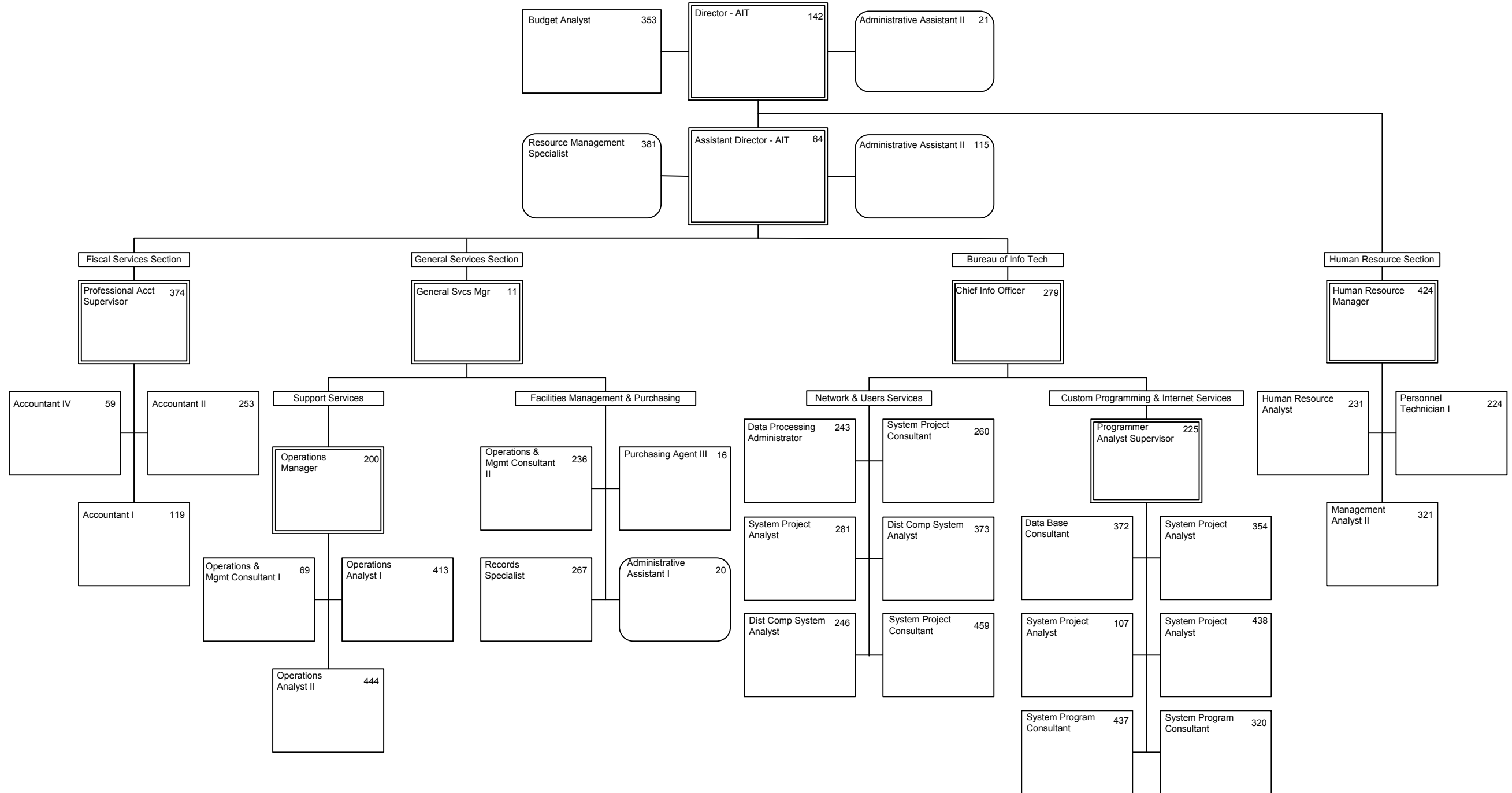
Office of the General Counsel



### Division of Accounting & Finance

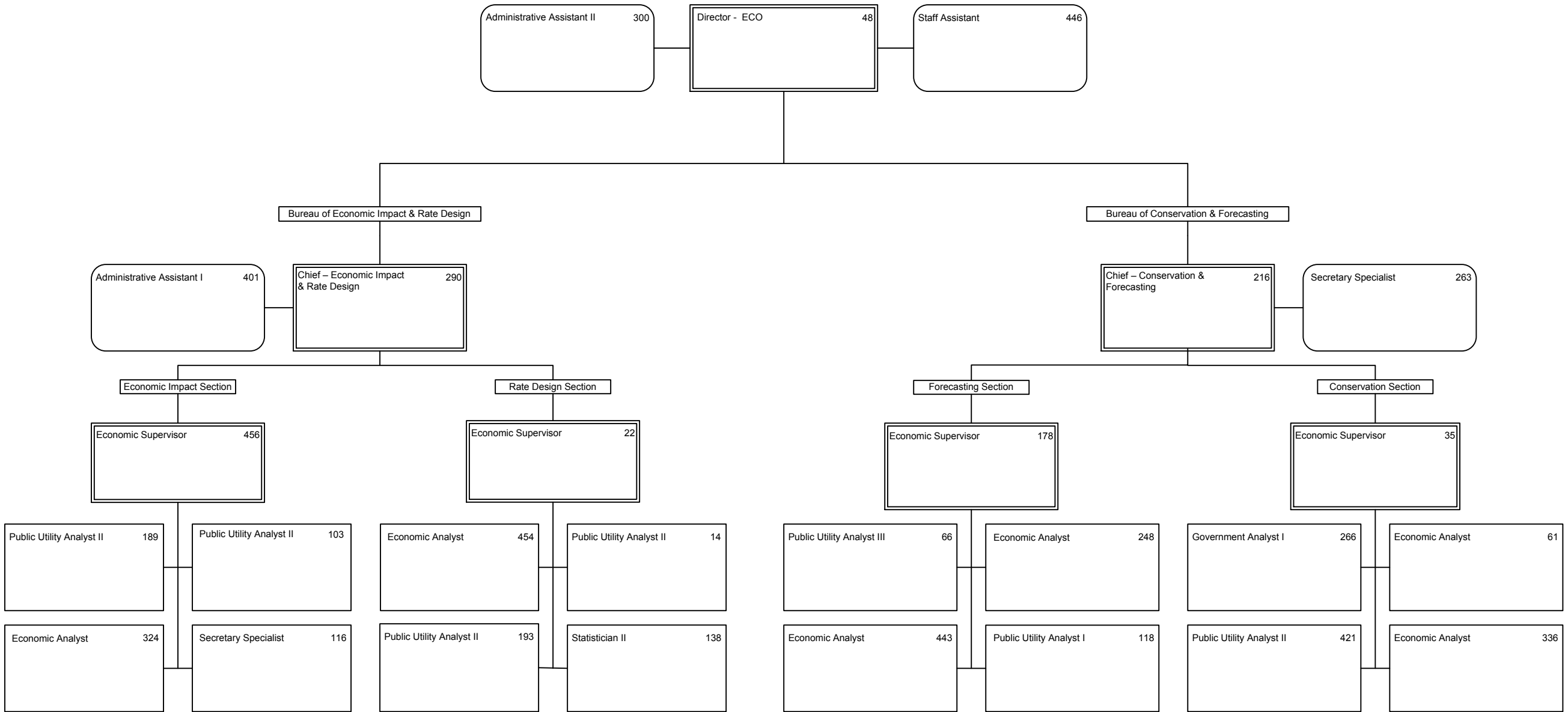


# Division of Administrative & Information Technology Services

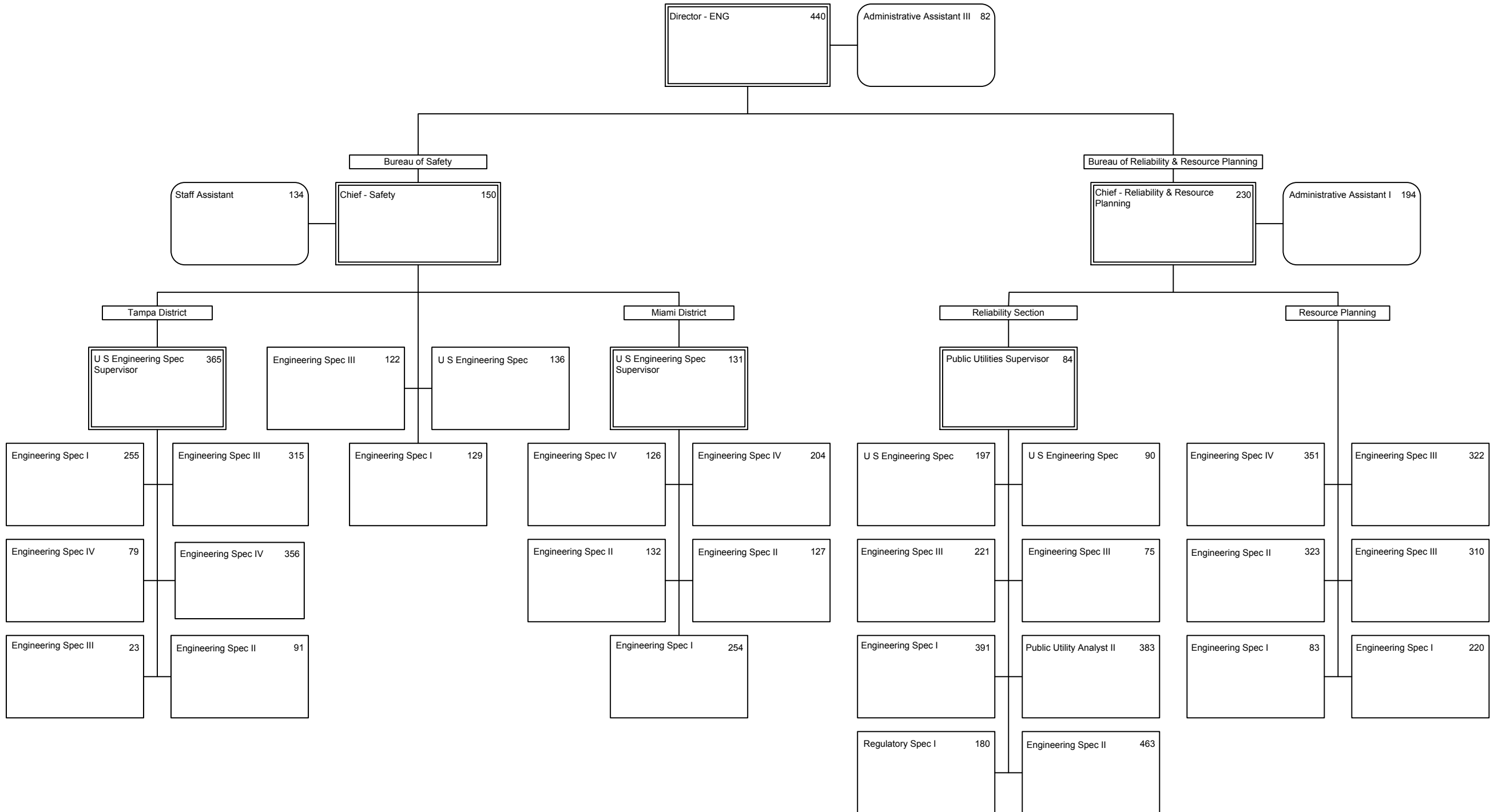




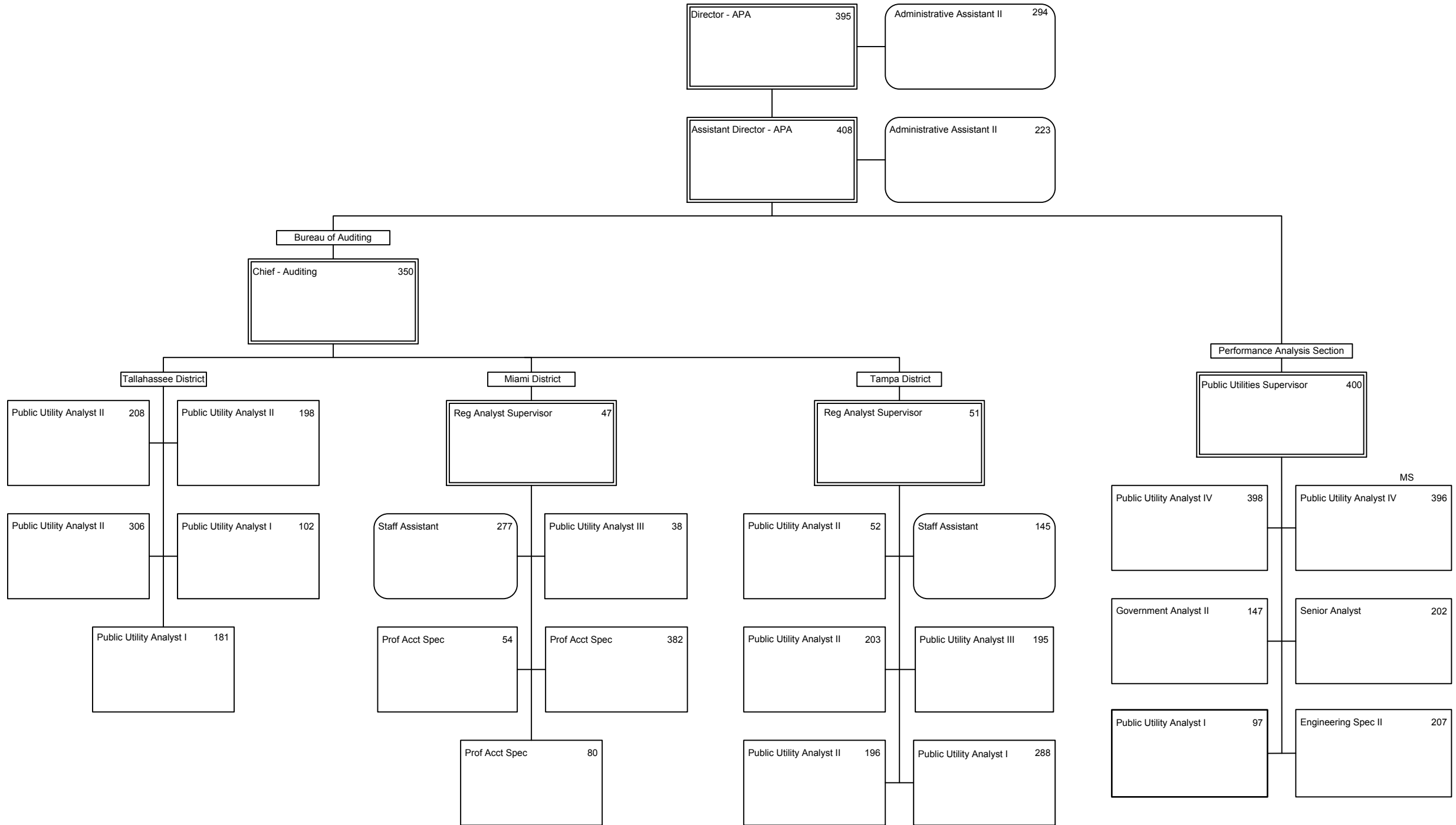
Division of Economics



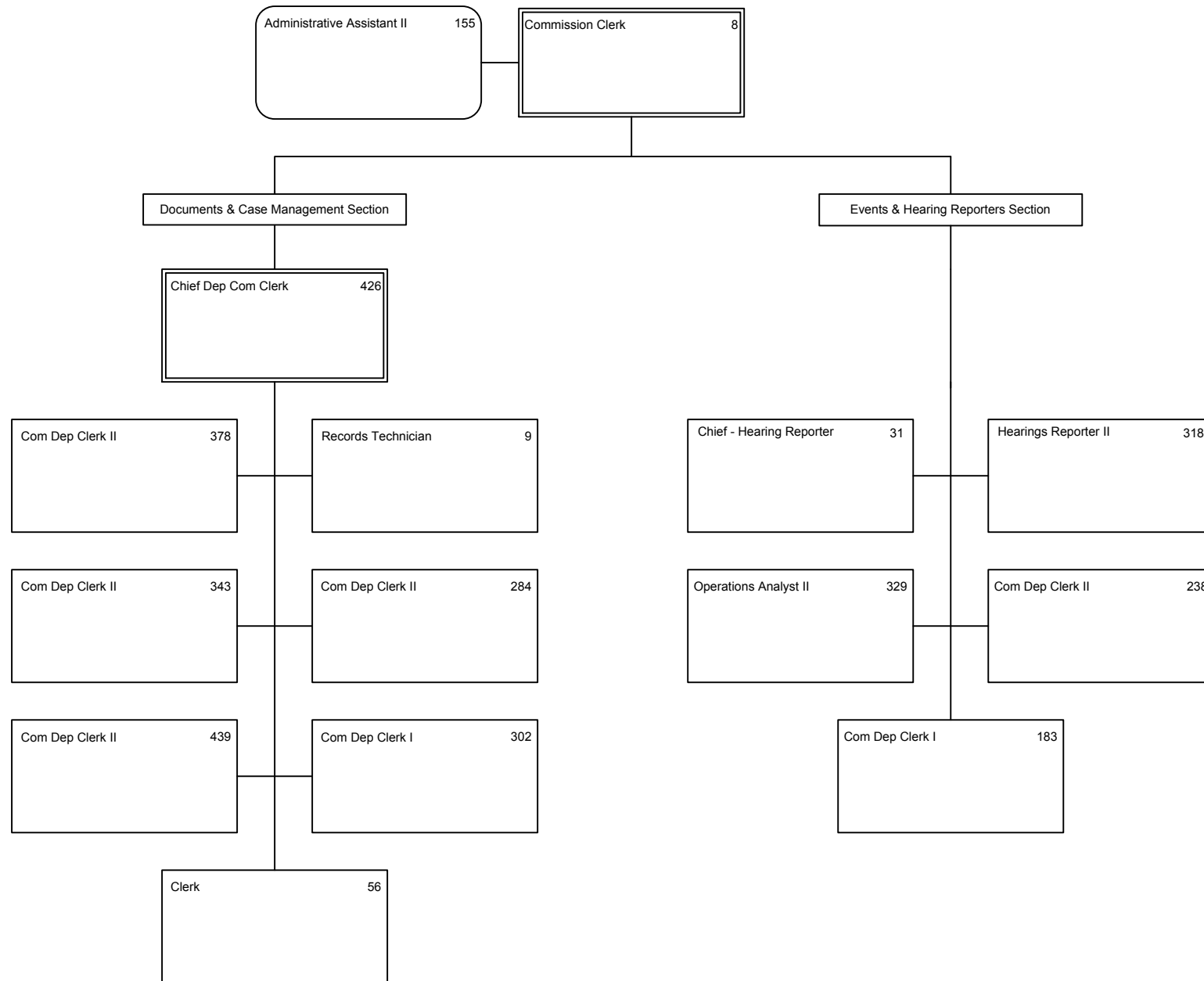
# Division of Engineering



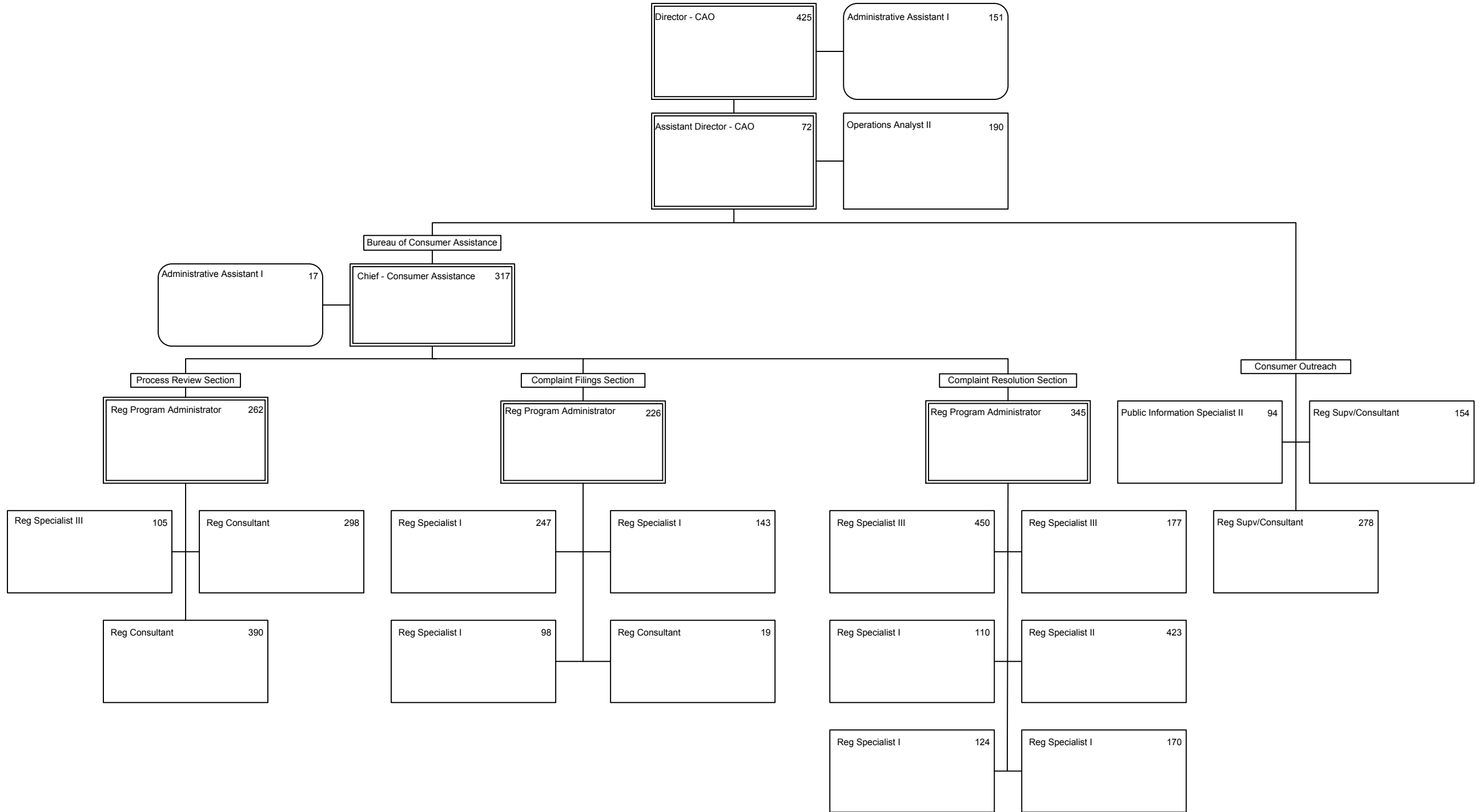
# Office of Auditing & Performance Analysis



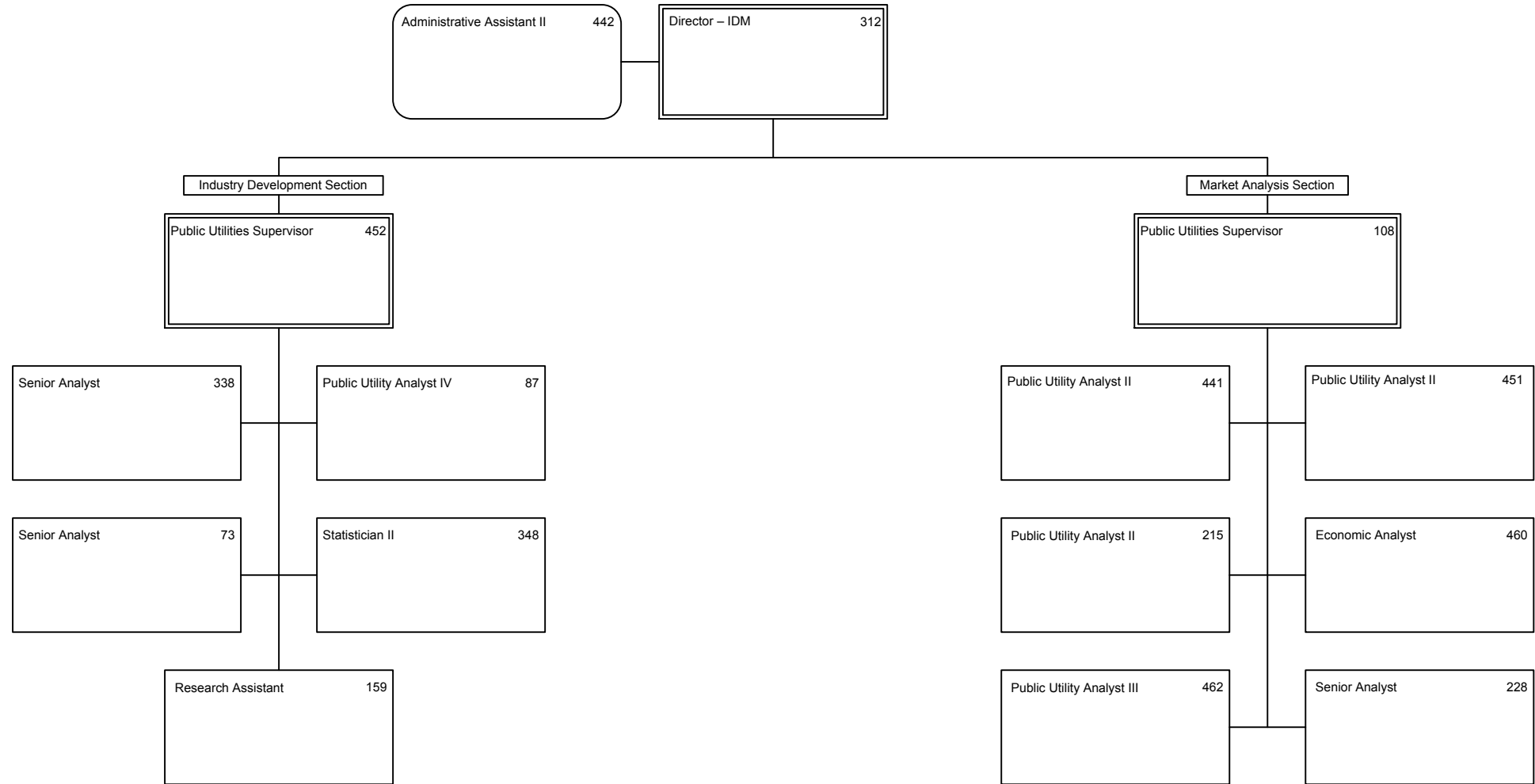
Office of Commission Clerk

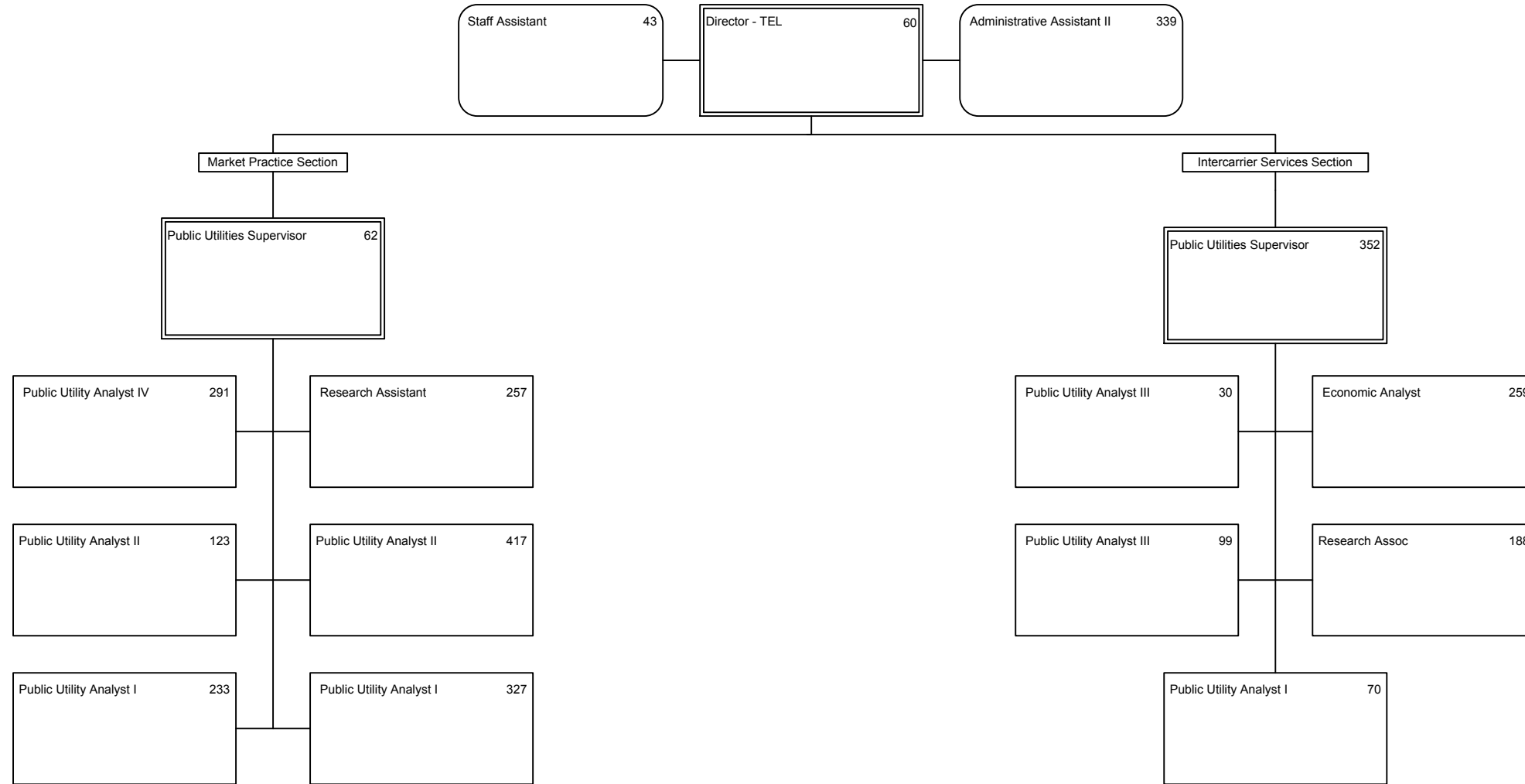


# Office of Consumer Assistance & Outreach



Office of Industry Development & Market Analysis









NUCSSP03 LAS/PBS SYSTEM  
BUDGET PERIOD: 2005-2016  
STATE OF FLORIDA

SP 09/08/2014 15:52  
SCHED XI: AGENCY-LEVEL UNIT COST SUMMARY  
AUDIT REPORT PUBLIC SERVICE COMMISSION

-----  
ACTIVITY ISSUE CODES SELECTED:

TRANSFER-STATE AGENCIES ACTIVITY ISSUE CODES SELECTED:

1-8:

AID TO LOCAL GOVERNMENTS ACTIVITY ISSUE CODES SELECTED:

1-8:

-----  
THE FOLLOWING STATEWIDE ACTIVITIES (ACT0010 THROUGH ACT0490) HAVE AN OUTPUT STANDARD (RECORD TYPE 5)  
AND SHOULD NOT:

\*\*\* NO ACTIVITIES FOUND \*\*\*

-----  
THE FCO ACTIVITY (ACT0210) CONTAINS EXPENDITURES IN AN OPERATING CATEGORY AND SHOULD NOT:  
(NOTE: THIS ACTIVITY IS ROLLED INTO EXECUTIVE DIRECTION, ADMINISTRATIVE SUPPORT AND INFORMATION  
TECHNOLOGY)

\*\*\* NO OPERATING CATEGORIES FOUND \*\*\*

-----  
THE FOLLOWING ACTIVITIES DO NOT HAVE AN OUTPUT STANDARD (RECORD TYPE 5) AND ARE REPORTED AS 'OTHER' IN  
SECTION III: (NOTE: 'OTHER' ACTIVITIES ARE NOT 'TRANSFER-STATE AGENCY' ACTIVITIES OR 'AID TO LOCAL  
GOVERNMENTS' ACTIVITIES. ALL ACTIVITIES WITH AN OUTPUT STANDARD (RECORD TYPE 5) SHOULD BE REPORTED  
IN SECTION II.)

\*\*\* NO ACTIVITIES FOUND \*\*\*

-----  
TOTALS FROM SECTION I AND SECTIONS II + III:

\*\*\* NO DISCREPANCIES FOUND \*\*\*

**Schedule XIV**  
**Variance from Long Range Financial Outlook**

**Agency:** Florida Public Service Commission      **Contact:** Apryl C. Lynn, Deputy Executive Director - Administrative

Article III, Section 19(a)3, Florida Constitution, requires each agency Legislative Budget Request to be based upon and reflect the long range financial outlook adopted by the Joint Legislative Budget Commission or to explain any variance from the outlook.

- 1) Does the long range financial outlook adopted by the Joint Legislative Budget Commission in September 2013 contain revenue or expenditure estimates related to your agency?

Yes       No

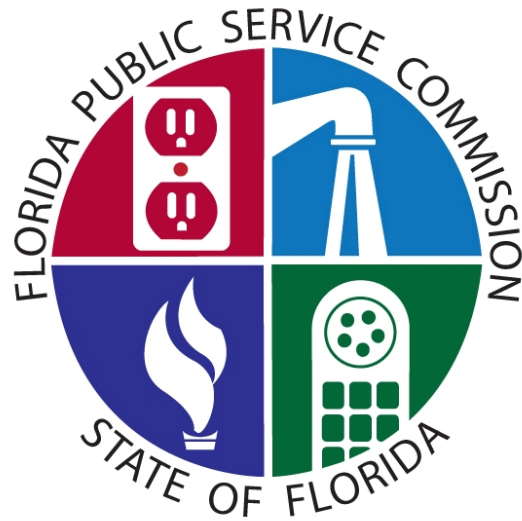
- 2) If yes, please list the estimates for revenues and budget drivers that reflect an estimate for your agency for Fiscal Year 2015-2016 and list the amount projected in the long range financial outlook and the amounts projected in your Schedule I or budget request.

	Issue (Revenue or Budget Driver)	R/B*	FY 2015-2016 Estimate/Request Amount	
			Long Range Financial Outlook	Legislative Budget Request
a				
b				
c				
d				
e				
f				

- 3) If your agency's Legislative Budget Request does not conform to the long range financial outlook with respect to the revenue estimates (from your Schedule I) or budget drivers, please explain the variance(s) below.

\* R/B = Revenue or Budget Driver

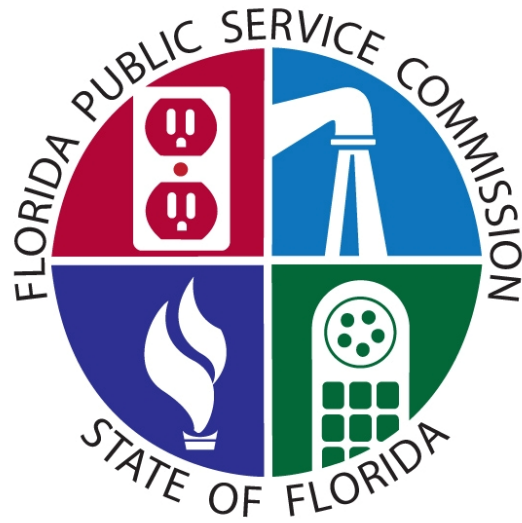
# Florida Public Service Commission



## UTILITY REGULATION AND CONSUMER ASSISTANCE PROGRAM

### Exhibits or Schedules

# Florida Public Service Commission



## Schedule I Series

**SCHEDULE 1A: DETAIL OF FEES AND RELATED PROGRAM COSTS**

**Department:** 61 Public Service Commission **Budget Period: 2015-16**  
**Program:** Commissioners & Admin. Services and Utility Regulation & Consumer Assistance  
**Fund:** 2573 Regulatory Trust Fund  
**Specific Authority:** Sections 350.113, 364.336, 366.14, 367.145, 368.109, 403 and 427 F.S.  
**Purpose of Fees Collected:** To fund the cost of regulating Telecommunications Companies, Electric and Gas Utilities, and Water & Wastewater Companies as required by Chapters 350, 364, 366, 367, 368, 403, 427 Florida Statutes.

Type of Fee or Program: (Check **ONE** Box and answer questions as indicated.)

<input checked="" type="checkbox"/>	Regulatory services or oversight to businesses or professions (Complete Sections I, II, and III and attach <b>Examination of Regulatory Fees</b> Form - Part I and II.)
<input type="checkbox"/>	Non-regulatory fees authorized to cover full cost of conducting a specific program or service. (Complete Sections I, II, and III only.)

<u>SECTION I - FEE COLLECTION</u>	<u>ACTUAL FY 2013 - 14</u>	<u>ESTIMATED FY 2014 - 15</u>	<u>REQUEST FY 2015 - 16</u>
<b>Receipts:</b>			
Regulatory Assessment Fees	\$24,432,072	\$25,380,155	\$25,450,963
Filing / Recording Fees	42,967	75,000	75,000
<b>Total Fee Collection to Line (A) - Section III</b>	<b>\$24,475,039</b>	<b>\$25,455,155</b>	<b>\$25,525,963</b>

<u>SECTION II - FULL COSTS</u>			
<b>Direct Costs:</b>			
Salaries and Benefits	\$14,941,616	\$15,743,161	\$15,674,774
Other Personal Services	60,105	153,630	153,630
Expenses	2,454,734	2,681,365	2,630,840
Operating Capital Outlay	178,502	203,883	203,883
Motor Vehicles	-	38,707	-
Administrative Hearings	5,346	-	-
Contracted Services	290,851	385,098	385,098
Risk Management	46,063	47,536	47,536
Transfer to DMS for HR Outsourcing	75,690	74,925	74,398
Data Processing Services	31,159	35,001	35,001
Southwood SRC	4,873	6,476	6,476
Refunds to utilities for overpayments	2,925	30,000	30,000
General Revenue Service Charge (8%)	1,958,092	2,038,012	2,043,677
Indirect Costs Charged to Trust Fund	5,594,984	5,920,441	5,872,103
<b>Total Full Costs to Line (B) - Section III</b>	<b>\$25,644,939</b>	<b>\$27,358,233</b>	<b>\$27,157,414</b>

Basis Used: People First Time Accounting System

<u>SECTION III - SUMMARY</u>				
TOTAL SECTION I	(A)	\$24,475,039	\$25,455,155	\$25,525,963
TOTAL SECTION II	(B)	\$25,644,939	\$27,358,233	\$27,157,414
<b>TOTAL - Surplus/Deficit</b>	<b>(C)</b>	<b>(\$1,169,900)</b>	<b>(\$1,903,078)</b>	<b>(\$1,631,451)</b>

**EXPLANATION of LINE C:**

Over the past year, the PSC has been working to develop and create efficiencies. These efforts should generate reversions of roughly \$800,000 for the current FY 2014-2015 with recurring savings in FY 2015-2016. Through internal controls, which include the previously mentioned anticipated reversions, management of vacancies, closely monitoring discretionary expenditures, and using a small amount of the cash balance, the PSC can manage both the projected negative balances in FY 2014-2015 and FY 2015-2016. Trust fund sweeps will jeopardize our continued ability to meet our fiscal obligations.

## SCHEDULE IC: RECONCILIATION OF UNRESERVED FUND BALANCE

<b>Department Title:</b>	<b>Budget Period: 2015 - 2016</b>
<b>Trust Fund Title:</b>	<b>Public Service Commission</b>
<b>Budget Entity:</b>	<b>Regulatory Trust Fund</b>
<b>LAS/PBS Fund Number:</b>	<b>61 - Public Service Commission</b>
	<b>2573</b>

	Balance as of 6/30/2014		SWFS* Adjustments	Adjusted Balance
<b>Chief Financial Officer's (CFO) Cash Balance</b>	\$5,025,549	(A)		\$5,025,549
ADD: Other Cash (See Instructions)	200	(B)		200
ADD: Investments		(C)		
ADD: Outstanding Accounts Receivable		(D)		
ADD: _____		(E)		
<b>Total Cash plus Accounts Receivable</b>	\$5,025,749	(F)		\$5,025,749
LESS Allowances for Uncollectibles		(G)		
LESS Approved "A" Carry Forwards	(76,646)	(H)		(76,646)
Approved "B" Carry Forwards	(8,604)	(H)		(8,604)
Approved "FCO" Carry Forwards		(H)		
LESS: Other Accounts Payable (Nonoperating)	(25,501)	(I)		(25,501)
LESS: _____		(J)		
<b>Unreserved Fund Balance, 07/01/14</b>	\$4,914,998	(K)		\$4,914,998

**Notes:**

\*SWFS = Statewide Financial Statement

\*\* This amount should agree with Line I, Section IV of the Schedule I for the most recent completed fiscal year and Line A for the following year.

**RECONCILIATION: BEGINNING TRIAL BALANCE TO SCHEDULE I and IC**

**Budget Period: 2015 - 2016**

**Department Title:** Public Service Commission  
**Trust Fund Title:** Regulatory Trust Fund  
**LAS/PBS Fund Number:** 2573

**BEGINNING TRIAL BALANCE:**

**Total Fund Balance Per FLAIR Trial Balance, 07/01/14**

Total all GLC's 5XXXX for governmental funds;  (A)  
GLC 539XX for proprietary and fiduciary funds

**Subtract Nonspendable Fund Balance (GLC 56XXX)**  (B)

**Add/Subtract Statewide Financial Statement (SWFS) Adjustments :**

SWFS Adjustment # and Description  (C)

SWFS Adjustment # and Description  (C)

**Add/Subtract Other Adjustment(s):**

Approved "B" Carry Forward (Encumbrances) per LAS/PBS  (D)

Approved "C" Carry Forward Total (FCO) per LAS/PBS  (D)

A/P not C/F-Operating Categories  (D)

Compensated Absences Liability  (D)

(D)

(D)

**ADJUSTED BEGINNING TRIAL BALANCE:**  (E)

**UNRESERVED FUND BALANCE, SCHEDULE IC (Line I)**  (F)

**DIFFERENCE:**  (G)\*

**\*SHOULD EQUAL ZERO.**

**SCHEDULE IX: MAJOR AUDIT FINDINGS AND RECOMMENDATIONS**

**Budget Period: 2015 - 16**

**Department:** Florida Public Service Commission

**Chief Internal Auditor:** Steven J. Stolting

**Budget Entity:** 61000000

**Phone Number:** (850) 413-6071

(1)	(2)	(3)	(4)	(5)	(6)
REPORT NUMBER	PERIOD ENDING	UNIT/AREA	SUMMARY OF FINDINGS AND RECOMMENDATIONS	SUMMARY OF CORRECTIVE ACTION TAKEN	ISSUE CODE
		Public Service Commission	Review of internal and external audits for FY 2013-14 and FY 2014-15 through 09/01/14 identified no major audit findings during the period.	N/A	N/A



## Fiscal Year 2015-16 LBR Technical Review Checklist

Department/Budget Entity (Service): Public Service Commission

Agency Budget Officer/OPB Analyst Name: Peter Queirolo / Julia Espy / Mike Atchley

A "Y" indicates "YES" and is acceptable, an "N/J" indicates "NO/Justification Provided" - these require further explanation/justification (additional sheets can be used as necessary), and "TIPS" are other areas to consider.

Action	Program or Service (Budget Entity Codes)				
	61020100	61020200	61020300	61030100	61030300

### 1. GENERAL

1.1 Are Columns A01, A02, A04, A05, A23, A24, A25, A36, A93, IA1, IA5, IA6, IP1, IV1, IV3 and NV1 set to TRANSFER CONTROL for DISPLAY status and MANAGEMENT CONTROL for UPDATE status for both the Budget and Trust Fund columns? Are Columns A06, A07, A08 and A09 for Fixed Capital Outlay (FCO) set to TRANSFER CONTROL for DISPLAY status only? <b>(CSDI)</b>	Y	Y	Y	Y	Y
1.2 Is Column A03 set to TRANSFER CONTROL for DISPLAY and UPDATE status for both the Budget and Trust Fund columns? <b>(CSDI)</b>	Y	Y	Y	Y	Y

### AUDITS:

1.3 Has Column A03 been copied to Column A12? Run the Exhibit B Audit Comparison Report to verify. <b>(EXBR, EXBA)</b>	Y	Y	Y	Y	Y
1.4 Has security been set correctly? <b>(CSDR, CSA)</b>	Y	Y	Y	Y	Y
<b>TIP</b> The agency should prepare the budget request for submission in this order: 1) Lock columns as described above; 2) copy Column A03 to Column A12; and 3) set Column A12 column security to ALL for DISPLAY status and MANAGEMENT CONTROL for UPDATE status.					

### 2. EXHIBIT A (EADR, EXA)

2.1 Is the budget entity authority and description consistent with the agency's LRPP and does it conform to the directives provided on page 59 of the LBR Instructions?	Y	Y	Y	Y	Y
2.2 Are the statewide issues generated systematically (estimated expenditures, nonrecurring expenditures, etc.) included?	Y	Y	Y	Y	Y
2.3 Are the issue codes and titles consistent with <i>Section 3</i> of the LBR Instructions (pages 15 through 29)? Do they clearly describe the issue?	Y	Y	Y	Y	Y
2.4 Have the coding guidelines in <i>Section 3</i> of the LBR Instructions (pages 15 through 29) been followed?	Y	Y	Y	Y	Y

### 3. EXHIBIT B (EXBR, EXB)

3.1 Is it apparent that there is a fund shift where an appropriation category's funding source is different between A02 and A03? Were the issues entered into LAS/PBS correctly? Check D-3A funding shift issue 340XXX0 - a unique deduct and unique add back issue should be used to ensure fund shifts display correctly on the LBR exhibits.	N/A	N/A	N/A	N/A	N/A
---	-----	-----	-----	-----	-----

### AUDITS:

3.2 Negative Appropriation Category Audit for Agency Request (Columns A03 and A04): Are all appropriation categories positive by budget entity at the FSI level? Are all nonrecurring amounts less than requested amounts? <b>(NACR, NAC - Report should print "No Negative Appropriation Categories Found")</b>	Y	Y	Y	Y	Y
--	---	---	---	---	---

Action		Program or Service (Budget Entity Codes)				
		61020100	61020200	61020300	61030100	61030300
3.3	Current Year Estimated Verification Comparison Report: Is Column A02 equal to Column B07? <b>(EXBR, EXBC - Report should print "Records Selected Net To Zero")</b>	Y	Y	Y	Y	Y
TIP	Generally look for and be able to fully explain significant differences between A02 and A03.					
TIP	Exhibit B - A02 equal to B07: Compares Current Year Estimated column to a backup of A02. This audit is necessary to ensure that the historical detail records have not been adjusted. Records selected should net to zero.					
TIP	Requests for appropriations which require advance payment authority must use the sub-title "Grants and Aids". For advance payment authority to local units of government, the Aid to Local Government appropriation category (05XXXX) should be used. For advance payment authority to non-profit organizations or other units of state government, the Special Categories appropriation category (10XXXX) should be used.					
<b>4. EXHIBIT D (EADR, EXD)</b>						
4.1	Is the program component objective statement consistent with the agency LRPP, and does it conform to the directives provided on page 61 of the LBR Instructions?	Y	Y	Y	Y	Y
4.2	Is the program component code and title used correct?	Y	Y	Y	Y	Y
TIP	Fund shifts or transfers of services or activities between program components will be displayed on an Exhibit D whereas it may not be visible on an Exhibit A.					
<b>5. EXHIBIT D-1 (ED1R, EXD1)</b>						
5.1	Are all object of expenditures positive amounts? (This is a manual check.)	Y	Y	Y	Y	Y
AUDITS:						
5.2	Do the fund totals agree with the object category totals within each appropriation category? <b>(ED1R, XD1A - Report should print "No Differences Found For This Report")</b>	Y	Y	Y	Y	Y
5.3	FLAIR Expenditure/Appropriation Ledger Comparison Report: Is Column A01 less than Column B04? <b>(EXBR, EXBB - Negative differences need to be corrected in Column A01.)</b>	Y	Y	Y	Y	Y
5.4	A01/State Accounts Disbursements and Carry Forward Comparison Report: Does Column A01 equal Column B08? <b>(EXBR, EXBD - Differences need to be corrected in Column A01.)</b>	Y	Y	Y	Y	Y
TIP	If objects are negative amounts, the agency must make adjustments to Column A01 to correct the object amounts. In addition, the fund totals must be adjusted to reflect the adjustment made to the object data.					
TIP	If fund totals and object totals do not agree or negative object amounts exist, the agency must adjust Column A01.					
TIP	Exhibit B - A01 less than B04: This audit is to ensure that the disbursements and carry/certifications forward in A01 are less than FY 2013-14 approved budget. Amounts should be positive.					

Action		Program or Service (Budget Entity Codes)				
		61020100	61020200	61020300	61030100	61030300
TIP	If B08 is not equal to A01, check the following: 1) the initial FLAIR disbursements or carry forward data load was corrected appropriately in A01; 2) the disbursement data from departmental FLAIR was reconciled to State Accounts; and 3) the FLAIR disbursements did not change after Column B08 was created.					
<b>6. EXHIBIT D-3 (ED3R, ED3) (Not required to be submitted in the LBR - for analytical purposes only.)</b>						
6.1	Are issues appropriately aligned with appropriation categories?	Y	Y	Y	Y	Y
TIP	Exhibit D-3 is no longer required in the budget submission but may be needed for this particular appropriation category/issue sort. Exhibit D-3 is also a useful report when identifying negative appropriation category problems.					
<b>7. EXHIBIT D-3A (EADR, ED3A)</b>						
7.1	Are the issue titles correct and do they clearly identify the issue? (See pages 15 through 33 of the LBR Instructions.)	Y	Y	Y	Y	Y
7.2	Does the issue narrative adequately explain the agency's request and is the explanation consistent with the LRPP? (See page 67-68 of the LBR Instructions.)	Y	Y	Y	Y	Y
7.3	Does the narrative for Information Technology (IT) issue follow the additional narrative requirements described on pages 69 through 71 of the LBR Instructions?	N/A	N/A	N/A	N/A	N/A
7.4	Are all issues with an IT component identified with a "Y" in the "IT COMPONENT?" field? If the issue contains an IT component, has that component been identified and documented?	N/A	N/A	N/A	N/A	N/A
7.5	Does the issue narrative explain any variances from the Standard Expense and Human Resource Services Assessments package? Is the nonrecurring portion in the nonrecurring column? (See pages E-4 through E-6 of the LBR Instructions.)	N/A	N/A	N/A	N/A	N/A
7.6	Does the salary rate request amount accurately reflect any new requests and are the amounts proportionate to the Salaries and Benefits request? Note: Salary rate should always be annualized.	N/A	N/A	N/A	N/A	N/A
7.7	Does the issue narrative thoroughly explain/justify all Salaries and Benefits amounts entered into the Other Salary Amounts transactions (OAD/C)? Amounts entered into OAD are reflected in the Position Detail of Salaries and Benefits section of the Exhibit D-3A.	Y	Y	Y	Y	Y
7.8	Does the issue narrative include the Consensus Estimating Conference forecast, where appropriate?	Y	Y	Y	Y	Y
7.9	Does the issue narrative reference the specific county(ies) where applicable?	N/A	N/A	N/A	N/A	N/A
7.10	Do the 160XXX0 issues reflect budget amendments that have been approved (or in the process of being approved) and that have a recurring impact (including Lump Sums)? Have the approved budget amendments been entered in Column A18 as instructed in Memo #14-001?	N/A	N/A	N/A	N/A	N/A
7.11	When appropriate are there any 160XXX0 issues included to delete positions placed in reserve in the OPB Position and Rate Ledger (e.g. unfunded grants)? Note: Lump sum appropriations not yet allocated should <u>not</u> be deleted. (PLRR, PLMO)	N/A	N/A	N/A	N/A	N/A

Action		Program or Service (Budget Entity Codes)				
		61020100	61020200	61020300	61030100	61030300
7.12	Does the issue narrative include plans to satisfy additional space requirements when requesting additional positions?	N/A	N/A	N/A	N/A	N/A
7.13	Has the agency included a 160XXX0 issue and 210XXXX and 260XXX0 issues as required for lump sum distributions?	N/A	N/A	N/A	N/A	N/A
7.14	Do the amounts reflect appropriate FSI assignments?	Y	Y	Y	Y	Y
7.15	Are the 33XXXX0 issues negative amounts only and do not restore nonrecurring cuts from a prior year or fund any issues that net to a positive or zero amount? Check D-3A issues 33XXXX0 - a unique issue should be used for issues that net to zero or a positive amount.	Y	Y	Y	Y	Y
7.16	Do the issues relating to <i>salary and benefits</i> have an "A" in the fifth position of the issue code (XXXXAXX) and are they self-contained (not combined with other issues)? (See page 28 and 88 of the LBR Instructions.)	N/A	N/A	N/A	N/A	N/A
7.17	Do the issues relating to <i>Information Technology (IT)</i> have a "C" in the sixth position of the issue code (36XXXXC) and are the correct issue codes used (361XXC0, 362XXC0, 363XXC0, 17C01C0, 17C02C0, 17C03C0, 24010C0, 33001C0, 330010C0, 33011C0, 160E470, 160E480 or 55C01C0)?	N/A	N/A	N/A	N/A	N/A
7.18	Are the issues relating to <i>major audit findings and recommendations</i> properly coded (4A0XXX0, 4B0XXX0)?	N/A	N/A	N/A	N/A	N/A
7.19	Does the issue narrative identify the strategy or strategies in the Five Year Statewide Strategic Plan for Economic Development?	N/A	N/A	N/A	N/A	N/A
<b>AUDIT:</b>						
7.20	Are all FSI's equal to '1', '2', '3', or '9'? There should be no FSI's equal to '0'. ( <b>ENDR, FSIA - Report should print "No Records Selected For Reporting"</b> )	Y	Y	Y	Y	Y
7.21	Does the General Revenue for 160XXXX (Adjustments to Current Year Expenditures) issues net to zero? ( <b>GENR, LBR1</b> )	N/A	N/A	N/A	N/A	N/A
7.22	Does the General Revenue for 180XXXX (Intra-Agency Reorganizations) issues net to zero? ( <b>GENR, LBR2</b> )	N/A	N/A	N/A	N/A	N/A
7.23	Does the General Revenue for 200XXXX (Estimated Expenditures Realignment) issues net to zero? ( <b>GENR, LBR3</b> )	N/A	N/A	N/A	N/A	N/A
7.24	Have FCO appropriations been entered into the nonrecurring column A04? ( <b>GENR, LBR4 - Report should print "No Records Selected For Reporting" or a listing of D-3A issue(s) assigned to Debt Service (IOE N) or in some cases State Capital Outlay - Public Education Capital Outlay (IOE L) )</b> )	N/A	N/A	N/A	N/A	N/A
TIP	Salaries and Benefits amounts entered using the OADA/C transactions must be thoroughly justified in the D-3A issue narrative. Agencies can run <b>OADA/OADR</b> from STAM to identify the amounts entered into OAD and ensure these entries have been thoroughly explained in the D-3A issue narrative.					
TIP	The issue narrative must completely and thoroughly explain and justify each D-3A issue. Agencies must ensure it provides the information necessary for the OPB and legislative analysts to have a complete understanding of the issue submitted. Thoroughly review pages 65 through 70 of the LBR Instructions.					

Action		Program or Service (Budget Entity Codes)				
		61020100	61020200	61020300	61030100	61030300
TIP	Check BAPS to verify status of budget amendments. Check for reapprovals not picked up in the General Appropriations Act. Verify that Lump Sum appropriations in Column A02 do not appear in Column A03. Review budget amendments to verify that 160XXX0 issue amounts correspond accurately and net to zero for General Revenue funds.					
TIP	If an agency is receiving federal funds from another agency the FSI should = 9 (Transfer - Recipient of Federal Funds). The agency that originally receives the funds directly from the federal agency should use FSI = 3 (Federal Funds).					
TIP	If a state agency needs to include in its LBR a realignment or workload request issue to align its data processing services category with its projected FY 2015-16 data center costs, this can be completed by using the new State Data Center data processing services category (210001). (NSRC data processing services category (210022) and the SSRC data processing services category (210021) will no longer be used).					
TIP	If an appropriation made in the FY 2014-15 General Appropriations Act duplicates an appropriation made in substantive legislation, the agency must create a unique deduct nonrecurring issue to eliminate the duplicated appropriation. Normally this is taken care of through line item veto.					
<b>8. SCHEDULE I &amp; RELATED DOCUMENTS (SC1R, SC1 - Budget Entity Level or SC1R, SC1D - Department Level)</b>						
8.1	Has a separate department level Schedule I and supporting documents package been submitted by the agency?	Y	Y	Y	Y	Y
8.2	Has a Schedule I and Schedule IB been completed in LAS/PBS for each operating trust fund?	Y	Y	Y	Y	Y
8.3	Have the appropriate Schedule I supporting documents been included for the trust funds (Schedule IA, Schedule IC, and Reconciliation to Trial Balance)?	Y	Y	Y	Y	Y
8.4	Have the Examination of Regulatory Fees Part I and Part II forms been included for the applicable regulatory programs?	Y	Y	Y	Y	Y
8.5	Have the required detailed narratives been provided (5% trust fund reserve narrative; method for computing the distribution of cost for general management and administrative services narrative; adjustments narrative; revenue estimating methodology narrative; fixed capital outlay adjustment narrative)?	Y	Y	Y	Y	Y
8.6	Has the Inter-Agency Transfers Reported on Schedule I form been included as applicable for transfers totaling \$100,000 or more for the fiscal year?	N/A	N/A	N/A	N/A	N/A
8.7	If the agency is scheduled for the annual trust fund review this year, have the Schedule ID and applicable draft legislation been included for recreation, modification or termination of existing trust funds?	N/A	N/A	N/A	N/A	N/A
8.8	If the agency is scheduled for the annual trust fund review this year, have the necessary trust funds been requested for creation pursuant to <i>section 215.32(2)(b), Florida Statutes</i> - including the Schedule ID and applicable legislation?	N/A	N/A	N/A	N/A	N/A
8.9	Are the revenue codes correct? In the case of federal revenues, has the agency appropriately identified direct versus indirect receipts (object codes 000700, 000750, 000799, 001510 and 001599)? For non-grant federal revenues, is the correct revenue code identified (codes 000504, 000119, 001270, 001870, 001970)?	Y	Y	Y	Y	Y
8.10	Are the statutory authority references correct?	Y	Y	Y	Y	Y

Action		Program or Service (Budget Entity Codes)				
		61020100	61020200	61020300	61030100	61030300
8.11	Are the General Revenue Service Charge percentage rates used for each revenue source correct? (Refer to Chapter 2009-78, Laws of Florida, for appropriate general revenue service charge percentage rates.)	Y	Y	Y	Y	Y
8.12	Is this an accurate representation of revenues based on the most recent Consensus Estimating Conference forecasts?	N/A	N/A	N/A	N/A	N/A
8.13	If there is no Consensus Estimating Conference forecast available, do the revenue estimates appear to be reasonable?	Y	Y	Y	Y	Y
8.14	Are the federal funds revenues reported in Section I broken out by individual grant? Are the correct CFDA codes used?	Y	Y	Y	Y	Y
8.15	Are anticipated grants included and based on the state fiscal year (rather than federal fiscal year)?	N/A	N/A	N/A	N/A	N/A
8.16	Are the Schedule I revenues consistent with the FSI's reported in the Exhibit D-3A?	Y	Y	Y	Y	Y
8.17	If applicable, are nonrecurring revenues entered into Column A04?	N/A	N/A	N/A	N/A	N/A
8.18	Has the agency certified the revenue estimates in columns A02 and A03 to be the latest and most accurate available? Does the certification include a statement that the agency will notify OPB of any significant changes in revenue estimates that occur prior to the Governor's Budget Recommendations being issued?	Y	Y	Y	Y	Y
8.19	Is a 5% trust fund reserve reflected in Section II? If not, is sufficient justification provided for exemption? Are the additional narrative requirements provided?	Y	Y	Y	Y	Y
8.20	Are appropriate general revenue service charge nonoperating amounts included in Section II?	Y	Y	Y	Y	Y
8.21	Are nonoperating expenditures to other budget entities/departments cross-referenced accurately?	Y	Y	Y	Y	Y
8.22	Do transfers balance between funds (within the agency as well as between agencies)? (See also 8.6 for required transfer confirmation of amounts totaling \$100,000 or more.)	N/A	N/A	N/A	N/A	N/A
8.23	Are nonoperating expenditures recorded in Section II and adjustments recorded in Section III?	Y	Y	Y	Y	Y
8.24	Are prior year September operating reversions appropriately shown in column A01?	Y	Y	Y	Y	Y
8.25	Are current year September operating reversions appropriately shown in column A02?	Y	Y	Y	Y	Y
8.26	Does the Schedule IC properly reflect the unreserved fund balance for each trust fund as defined by the LBR Instructions, and is it reconciled to the agency accounting records?	Y	Y	Y	Y	Y
8.27	Has the agency properly accounted for continuing appropriations (category 13XXXX) in column A01, Section III?	N/A	N/A	N/A	N/A	N/A
8.28	Does Column A01 of the Schedule I accurately represent the actual prior year accounting data as reflected in the agency accounting records, and is it provided in sufficient detail for analysis?	Y	Y	Y	Y	Y
8.29	Does Line I of Column A01 (Schedule I) equal Line K of the Schedule IC?	Y	Y	Y	Y	Y
AUDITS:						

Action		Program or Service (Budget Entity Codes)				
		61020100	61020200	61020300	61030100	61030300
8.30	Is Line I a positive number? (If not, the agency must adjust the budget request to eliminate the deficit).	Y	Y	Y	Y	Y
8.31	Is the June 30 Adjusted Unreserved Fund Balance (Line I) equal to the July 1 Unreserved Fund Balance (Line A) of the following year? If a Schedule IB was prepared, do the totals agree with the Schedule I, Line I? ( <b>SC1R, SC1A - Report should print "No Discrepancies Exist For This Report"</b> )	Y	Y	Y	Y	Y
8.32	Has a Department Level Reconciliation been provided for each trust fund and does Line A of the Schedule I equal the CFO amount? If not, the agency must correct Line A. ( <b>SC1R, DEPT</b> )	Y	Y	Y	Y	Y
8.33	Has a Schedule IB been provided for each trust fund and does total agree with line I ?	Y	Y	Y	Y	Y
8.34	Have A/R been properly analyzed and any allowances for doubtful accounts been properly recorded on the Schedule IC?	Y	Y	Y	Y	Y
TIP	The Schedule I is the most reliable source of data concerning the trust funds. It is very important that this schedule is as accurate as possible!					
TIP	Determine if the agency is scheduled for trust fund review. (See page 130 of the LBR Instructions.) Transaction DFTR in LAS/PBS is also available and provides an LBR review date for each trust fund.					
TIP	Review the unreserved fund balances and compare revenue totals to expenditure totals to determine and understand the trust fund status.					
TIP	Typically nonoperating expenditures and revenues should not be a negative number. Any negative numbers must be fully justified.					
<b>9. SCHEDULE II (PSCR, SC2)</b>						
AUDIT:						
9.1	Is the pay grade minimum for salary rate utilized for positions in segments 2 and 3? ( <b>BRAR, BRAA - Report should print "No Records Selected For This Request"</b> ) Note: Amounts other than the pay grade minimum should be fully justified in the D-3A issue narrative. (See <i>Base Rate Audit</i> on page 161 of the LBR Instructions.)	Y	Y	Y	Y	Y
<b>10. SCHEDULE III (PSCR, SC3)</b>						
10.1	Is the appropriate lapse amount applied in Segment 3? (See page 92 of the LBR Instructions.)	N/A	N/A	N/A	N/A	N/A
10.2	Are amounts in <i>Other Salary Amount</i> appropriate and fully justified? (See page 99 of the LBR Instructions for appropriate use of the OAD transaction.) Use <b>OADI</b> or <b>OADR</b> to identify agency other salary amounts requested.	Y	Y	Y	Y	Y
<b>11. SCHEDULE IV (EADR, SC4)</b>						
11.1	Are the correct Information Technology (IT) issue codes used?	N/A	N/A	N/A	N/A	N/A
TIP	If IT issues are not coded correctly (with "C" in 6th position), they will not appear in the Schedule IV.					
<b>12. SCHEDULE VIIIA (EADR, SC8A)</b>						

Action		Program or Service (Budget Entity Codes)				
		61020100	61020200	61020300	61030100	61030300
12.1	Is there only one #1 priority, one #2 priority, one #3 priority, etc. reported on the Schedule VIII-A? Are the priority narrative explanations adequate? Note: FCO issues can now be included in the priority listing.	N/A	N/A	N/A	N/A	N/A
<b>13. SCHEDULE VIII B-1 (EADR, S8B1)</b>						
13.1	<b>NOT REQUIRED FOR THIS YEAR</b>	N/A	N/A	N/A	N/A	N/A
<b>14. SCHEDULE VIII B-2 (EADR, S8B2)</b>						
14.1	Do the reductions comply with the instructions provided on pages 104 through 106 of the LBR Instructions regarding a 5% reduction in recurring General Revenue and Trust Funds, including the verification that the 33BXXX0 issue has NOT been used?	Y	Y	Y	Y	Y
<b>15. SCHEDULE VIII C (EADR, S8C) (LAS/PBS Web - see page 107-109 of the LBR Instructions for detailed instructions)</b>						
15.1	Agencies are required to generate this schedule via the LAS/PBS Web.	Y	Y	Y	Y	Y
15.2	Does the schedule include at least three and no more than 10 unique reprioritization issues, in priority order? Manual Check.	Y	Y	Y	Y	Y
15.3	Does the schedule display reprioritization issues that are each comprised of two unique issues - a deduct component and an add-back component which net to zero at the department level?	Y	Y	Y	Y	Y
15.4	Are the priority narrative explanations adequate and do they follow the guidelines on pages 107-109 of the LBR instructions?	Y	Y	Y	Y	Y
15.5	Does the issue narrative in A6 address the following: Does the state have the authority to implement the reprioritization issues independent of other entities (federal and local governments, private donors, etc.)? Are the reprioritization issues an allowable use of the recommended funding source?	Y	Y	Y	Y	Y
<b>AUDIT:</b>						
15.6	Do the issues net to zero at the department level? ( <b>GENR, LBR5</b> )	Y	Y	Y	Y	Y
<b>16. SCHEDULE XI (USCR,SCXI) (LAS/PBS Web - see page 110-114 of the LBR Instructions for detailed instructions)</b>						
16.1	Agencies are required to generate this spreadsheet via the LAS/PBS Web. <b>The Final Excel version no longer has to be submitted to OPB for inclusion on the Governor's Florida Performs Website.</b> (Note: Pursuant to <i>section 216.023(4) (b), Florida Statutes</i> , the Legislature can reduce the funding level for any agency that does not provide this information.)	Y	Y	Y	Y	Y
16.2	Do the PDF files uploaded to the Florida Fiscal Portal for the LRPP and LBR match?	Y	Y	Y	Y	Y
<b>AUDITS INCLUDED IN THE SCHEDULE XI REPORT:</b>						
16.3	Does the FY 2013-14 Actual (prior year) Expenditures in Column A36 reconcile to Column A01? ( <b>GENR, ACT1</b> )	Y	Y	Y	Y	Y
16.4	None of the executive direction, administrative support and information technology statewide activities (ACT0010 thru ACT0490) have output standards (Record Type 5)? ( <b>Audit #1 should print "No Activities Found"</b> )	Y	Y	Y	Y	Y
16.5	Does the Fixed Capital Outlay (FCO) statewide activity (ACT0210) only contain 08XXXX or 14XXXX appropriation categories? ( <b>Audit #2 should print "No Operating Categories Found"</b> )	N/A	N/A	N/A	N/A	N/A



Action		Program or Service (Budget Entity Codes)				
		61020100	61020200	61020300	61030100	61030300
16.6	Has the agency provided the necessary standard (Record Type 5) for all activities which <u>should</u> appear in Section II? (Note: <b>Audit #3</b> will identify those activities that do NOT have a Record Type '5' and have not been identified as a 'Pass Through' activity. These activities will be displayed in Section III with the 'Payment of Pensions, Benefits and Claims' activity and 'Other' activities. Verify if these activities should be displayed in Section III. If not, an output standard would need to be added for that activity and the Schedule XI submitted again.)	Y	Y	Y	Y	Y
16.7	Does Section I (Final Budget for Agency) and Section III (Total Budget for Agency) equal? ( <b>Audit #4 should print "No Discrepancies Found"</b> )	Y	Y	Y	Y	Y
TIP	If Section I and Section III have a small difference, it may be due to rounding and therefore will be acceptable.					
<b>17. MANUALLY PREPARED EXHIBITS &amp; SCHEDULES</b>						
17.1	Do exhibits and schedules comply with LBR Instructions (pages 115 through 158 of the LBR Instructions), and are they accurate and complete?	Y	Y	Y	Y	Y
17.2	Are appropriation category totals comparable to Exhibit B, where applicable?	Y	Y	Y	Y	Y
17.3	Are agency organization charts (Schedule X) provided and at the appropriate level of detail?	Y	Y	Y	Y	Y
17.4	Does the LBR include a separate IV-B for each IT project over \$1 million (see page 134 of the LBR instructions for exemptions to this rule)? Have all IV-B been emailed to: IT@LASPBS.state.fl.us	N/A	N/A	N/A	N/A	N/A
17.5	Are all forms relating to Fixed Capital Outlay (FCO) funding requests submitted in the proper form, including a Truth in Bonding statement (if applicable) ?	N/A	N/A	N/A	N/A	N/A
<b>AUDITS - GENERAL INFORMATION</b>						
TIP	Review <i>Section 6: Audits</i> of the LBR Instructions (pages 160-162) for a list of audits and their descriptions.					
TIP	Reorganizations may cause audit errors. Agencies must indicate that these errors are due to an agency reorganization to justify the audit error.					
<b>18. CAPITAL IMPROVEMENTS PROGRAM (CIP)</b>						
18.1	Are the CIP-2, CIP-3, CIP-A and CIP-B forms included?	Y	Y	Y	Y	Y
18.2	Are the CIP-4 and CIP-5 forms submitted when applicable (see CIP Instructions)?	N/A	N/A	N/A	N/A	N/A
18.3	Do all CIP forms comply with CIP Instructions where applicable (see CIP Instructions)?	Y	Y	Y	Y	Y
18.4	Does the agency request include 5 year projections (Columns A03, A06, A07, A08 and A09)?	Y	Y	Y	Y	Y
18.5	Are the appropriate counties identified in the narrative?	N/A	N/A	N/A	N/A	N/A
18.6	Has the CIP-2 form (Exhibit B) been modified to include the agency priority for each project and the modified form saved as a PDF document?	N/A	N/A	N/A	N/A	N/A
TIP	Requests for Fixed Capital Outlay appropriations which are Grants and Aids to Local Governments and Non-Profit Organizations must use the Grants and Aids to Local Governments and Non-Profit Organizations - Fixed Capital Outlay major appropriation category (140XXX) and include the sub-title "Grants and Aids". These appropriations utilize a CIP-B form as justification.					
<b>19. FLORIDA FISCAL PORTAL</b>						

Action	Program or Service (Budget Entity Codes)				
	61020100	61020200	61020300	61030100	61030300
19.1 Have all files been assembled correctly and posted to the Florida Fiscal Portal as outlined in the Florida Fiscal Portal Submittal Process?	Y	Y	Y	Y	Y